



BASEBALL

Spring 2025



UNDER ARMOUR

**THE ONLY
WAY IS
THROUGH.**





VISION

TO INSPIRE YOU WITH PERFORMANCE
SOLUTIONS YOU NEVER KNEW
YOU NEEDED BUT CAN'T IMAGINE
LIVING WITHOUT.

MISSION

UNDER ARMOUR
MAKES YOU BETTER.

BASEBALL —

- 002 BASEBALL UNIFORMS
- 022 BASEBALL APPAREL
- 027 BASEBALL SOCKS
- 028 BASEBALL FOOTWEAR
- 030 BASEBALL BATTING GLOVES
- 032 BASEBALL BAGS
- 034 BASEBALL HEADWEAR
- 044 BASEBALL EYEWEAR
- 050 MEN'S AF TRAINING
- 060 UNIFORM ORDERING INFO

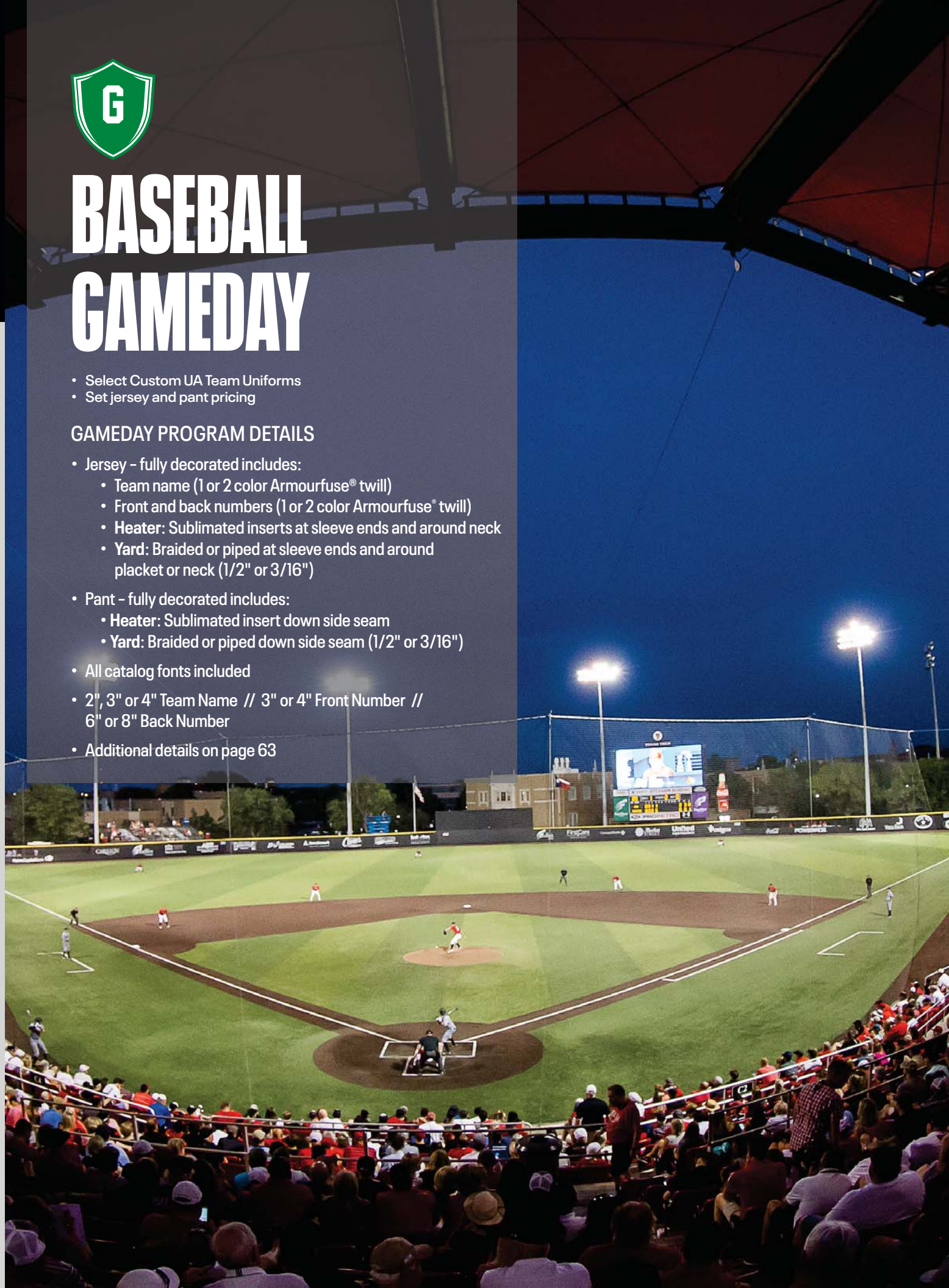


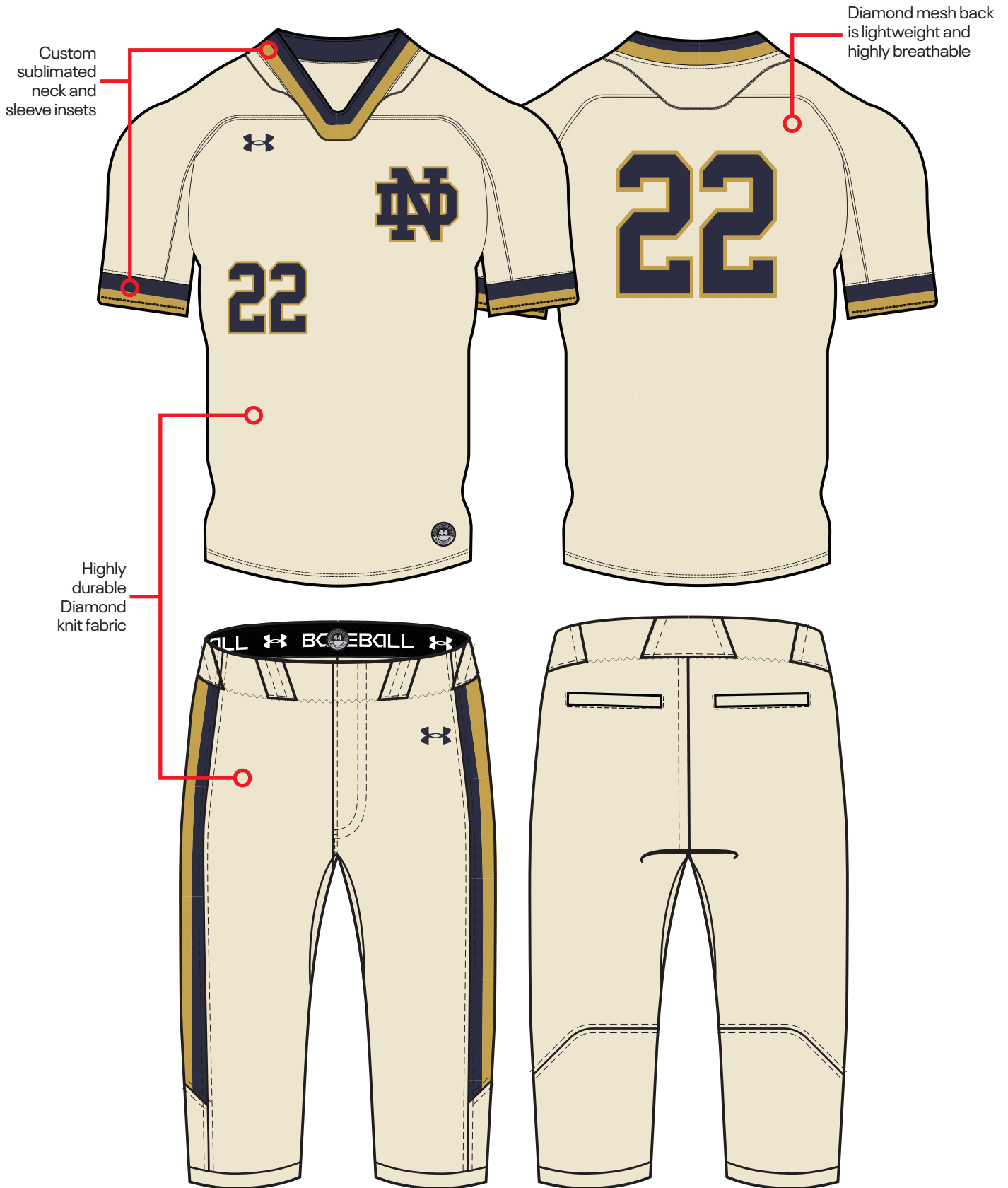
BASEBALL GAMEDAY

- Select Custom UA Team Uniforms
- Set jersey and pant pricing

GAMEDAY PROGRAM DETAILS

- Jersey - fully decorated includes:
 - Team name (1 or 2 color Armourfuse® twill)
 - Front and back numbers (1 or 2 color Armourfuse® twill)
 - Heater: Sublimated inserts at sleeve ends and around neck
 - Yard: Braided or piped at sleeve ends and around placket or neck (1/2" or 3/16")
- Pant - fully decorated includes:
 - Heater: Sublimated insert down side seam
 - Yard: Braided or piped down side seam (1/2" or 3/16")
- All catalog fonts included
- 2", 3" or 4" Team Name // 3" or 4" Front Number // 6" or 8" Back Number
- Additional details on page 63





HEATER JERSEYS

SM-2XL, OVERSIZE 3XL

| 2-BUTTON | SIZE | FABRIC | PRICE |
|-------------|--------|------------|----------|
| UB030JM (M) | SM-2XL | SOLID | \$172.00 |
| UBP30JM (M) | SM-2XL | PINSTRIPES | \$202.00 |
| V-NECK | DESIGN | FABRIC | PRICE |
| UB029JM (M) | SM-2XL | SOLID | \$172.00 |
| UBP29JM (M) | SM-2XL | PINSTRIPES | \$202.00 |

- 100% Polyester
- Diamond Knit Front + Diamond Mesh Back (Pinstripe version = Diamond Knit Back)
- Functional top two buttons or modern v-neck construction
- Sublimated inserts around neck and sleeves
- Size LG Measurements: front body length 26.50", sleeve length from center neck 16", across chest width from under armhole 19.5"
- Modern raglan sleeves shaped to increase shoulder mobility and full mesh back for overall comfort and breathability

OVERSIZED SURCHARGE +\$5 PER SIZE



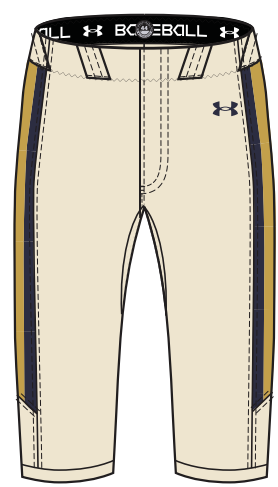
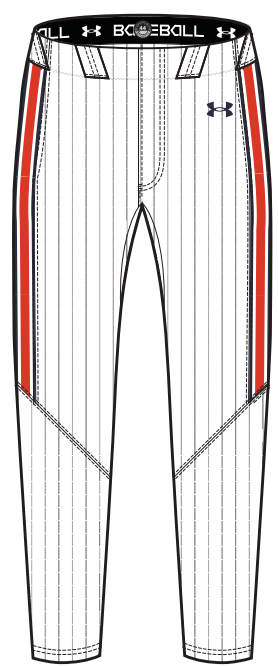
HEATER PANTS

SM-2XL, OVERSIZE 3XL

| TAPERED | DESIGN | FABRIC | PRICE |
|-------------|--------|------------|----------|
| UB022PM (M) | SM-2XL | SOLID | \$146.00 |
| UBP22PM (M) | SM-2XL | PINSTRIPES | \$176.00 |
| RELAXED | DESIGN | FABRIC | PRICE |
| UB021PM (M) | SM-2XL | SOLID | \$146.00 |
| UBP21PM (M) | SM-2XL | PINSTRIPES | \$176.00 |
| KNICKER | DESIGN | FABRIC | PRICE |
| UB035PM (M) | SM-2XL | SOLID | \$146.00 |
| UBP35PM (M) | SM-2XL | PINSTRIPES | \$176.00 |

- 100% Polyester - Diamond Knit
- Relaxed Pant inseam= 32"
- Tapered Pant inseam = 30"
- Knicker inseam = 18"
- 2-ply reinforced knees + hamstrings
- Sublimated side inserts
- Custom inseams available on all pants -2" or +2" (no charge)

OVERSIZED SURCHARGE +\$5 PER SIZE



2-BUTTON

SHOWN WITH TAPERED PANT

V-NECK

SHOWN WITH KNICKER PANT

JERSEY AND PANT COLORS:

| | | | | | | |
|-----|-----|-----|-----|-----|-----|-----|
| WHT | VWH | BBG | GPH | BLK | PUR | MDN |
| RYL | VBL | FGR | DKO | RED | MAR | CRD |

PINSTRIPES:

| | | | | | | | | | |
|---------|---------|---------|---------|---------|---------|---------|---------|---------|---------|
| WHT/BLK | WHT/PUR | WHT/MDN | WHT/RYL | WHT/VBL | WHT/FGR | WHT/DKO | WHT/RED | WHT/MAR | WHT/CRD |
| BBG/BLK | WHT/PUR | WHT/MDN | WHT/RYL | WHT/VBL | WHT/FGR | WHT/DKO | WHT/RED | WHT/MAR | WHT/CRD |
| VWH/BLK | WHT/PUR | WHT/MDN | WHT/RYL | WHT/VBL | WHT/FGR | WHT/DKO | WHT/RED | WHT/MAR | WHT/CRD |

- Dyed ground with sublimated pinstripes

YARD FULL PLACKET JERSEY

SM-2XL, OVERSIZE 3XL

| FULL PLACKET | DESIGN | FABRIC | PRICE |
|--------------|--------|------------|----------|
| UBO24JM (M) | SM-2XL | SOLID | \$166.00 |
| UBP24JM (M) | SM-2XL | PINSTRIPES | \$196.00 |

- 100% Polyester
- Diamond Knit Front + Diamond Mesh Back (Pinstripe version = Diamond Knit Back)
- Full Placket functional buttons down entire front closure
- Size LG Measurements: front body length 26.50", sleeve length from center neck 16", across chest width from under armhole 19.5"
- Modern raglan sleeves shaped to increase shoulder mobility and full mesh back for overall comfort and breathability

OVERSIZED SURCHARGE +\$5 PER SIZE



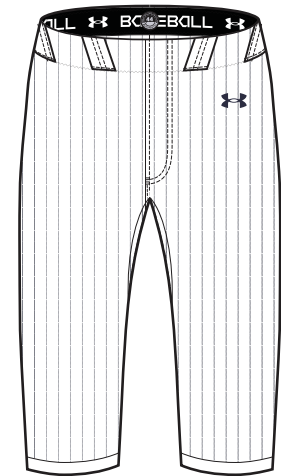
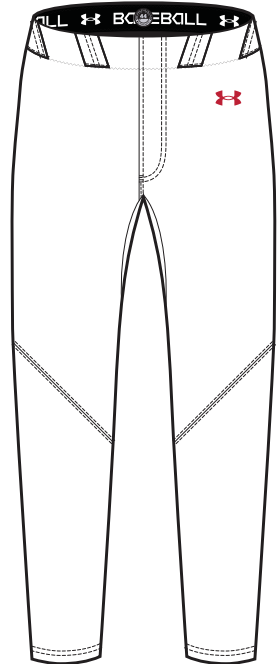
YARD PANTS

SM-2XL, OVERSIZE 3XL

| TAPERED | DESIGN | FABRIC | PRICE |
|-------------|--------|------------|----------|
| UBO26PM (M) | SM-2XL | SOLID | \$136.00 |
| UBP26PM (M) | SM-2XL | PINSTRIPES | \$166.00 |
| RELAXED | DESIGN | FABRIC | PRICE |
| UBO25PM (M) | SM-2XL | SOLID | \$136.00 |
| UBP25PM (M) | SM-2XL | PINSTRIPES | \$166.00 |
| KNICKER | DESIGN | FABRIC | PRICE |
| UBO36PM (M) | SM-2XL | SOLID | \$136.00 |
| UBP36PM (M) | SM-2XL | PINSTRIPES | \$166.00 |

- 100% Polyester - Diamond Knit
- Relaxed Pant inseam = 32"
Tapered Pant inseam = 30"
Knickers inseam = 18"
- 2-ply reinforced knees + hamstrings
- Custom inseams available on all pants
-2" or +2" (no charge)

OVERSIZED SURCHARGE +\$5 PER SIZE



FULL PLACKET

SHOWN WITH TAPERED PANT

FULL PLACKET

SHOWN WITH KNICKER PANT

JERSEY AND PANT COLORS:

| | | | | | | |
|-----|-----|-----|-----|-----|-----|-----|
| WHT | VWH | BBG | GPH | BLK | PUR | MDN |
| RYL | VBL | FGR | DKO | RED | MAR | CRD |

PINSTRIPES:

| | | | | | | | | | |
|---------|---------|---------|---------|---------|---------|---------|---------|---------|---------|
| WHT/BLK | WHT/PUR | WHT/MDN | WHT/RYL | WHT/VBL | WHT/FGR | WHT/DKO | WHT/RED | WHT/MAR | WHT/CRD |
| BBG/BLK | WHT/PUR | WHT/MDN | WHT/RYL | WHT/VBL | WHT/FGR | WHT/DKO | WHT/RED | WHT/MAR | WHT/CRD |
| VWH/BLK | WHT/PUR | WHT/MDN | WHT/RYL | WHT/VBL | WHT/FGR | WHT/DKO | WHT/RED | WHT/MAR | WHT/CRD |

- Dyed ground with sublimated pinstripes







BASEBALL ARMOURFUSE

- Brilliant, vibrant team colors permanently fused directly into textiles
- Limitless customization, all-inclusive pricing with exclusive UA designs and customized prints
- 41 different colors and 18 prints available
- 6 piece minimum order

Diamond Select Jersey: 100% Polyester featuring a Diamond Knit front & Diamond Mesh back.

Diamond Jersey: 100% Polyester featuring Diamond Mesh front and 87% Polyester/13% Elastane Utility Mesh back.



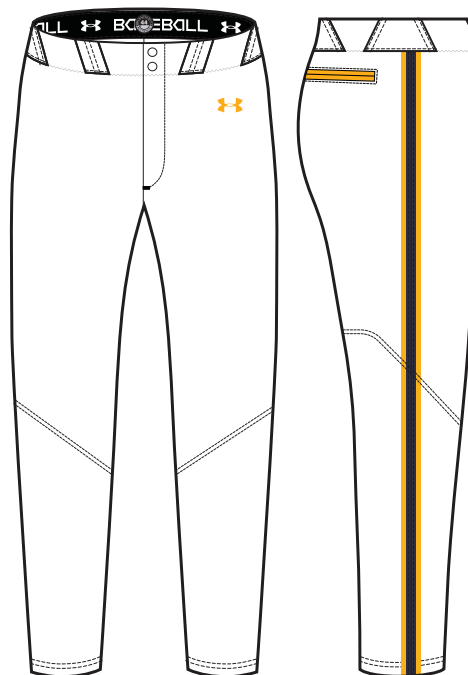
DIAMOND SELECT PANTS

NEW NAME, SAME GREAT PRODUCT
(Previously M ArmourFuse Baseball Pants)

SM-2XL, OVERSIZE 3XL, YXS-YXL

| TAPERED | SIZE | FABRIC | PRICE |
|-------------|---------|------------|----------|
| UJBPSTM (M) | SM-2XL | SUBLIMATED | \$149.50 |
| UJBPTY (Y) | YXS-YXL | SUBLIMATED | \$149.50 |
| RELAXED | SIZE | FABRIC | PRICE |
| UJBPSRM (M) | SM-2XL | SUBLIMATED | \$149.50 |
| UJBPSRY (Y) | YXS-YXL | SUBLIMATED | \$149.50 |
| KNICKER | SIZE | FABRIC | PRICE |
| UJBPSKM (M) | SM-2XL | SUBLIMATED | \$149.50 |
| UJBPSKY (Y) | YXS-YXL | SUBLIMATED | \$149.50 |

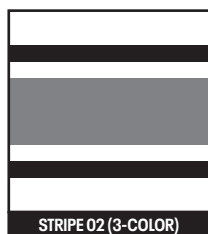
- 100% Polyester-Sublimated
- Relaxed Pant inseam = 32"
- Tapered Pant inseam = 30"
- Knicker inseam = 18"
- Available in Pinstripes/Solid
- Can be paired with Showtime or Gametime Jerseys
- +2" or -2" inseam (no charge), or +4" (+\$15; Relaxed/Tapered only)
- Reinforced 2-Ply Rear Slide Zone in the hamstrings for added durability
- Upgraded Elastic Waistband



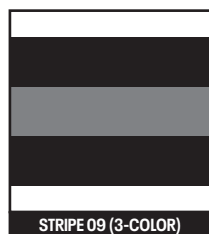
CAMDEN 3 STRIPE

NEW DESIGN FIRST SHIP: 10/26/2024

**IF YOU HAVE QUESTIONS ON SLEEVE STRIPE PAIRINGS
PLEASE ASK A QUALIFIED SALES PROFESSIONAL**

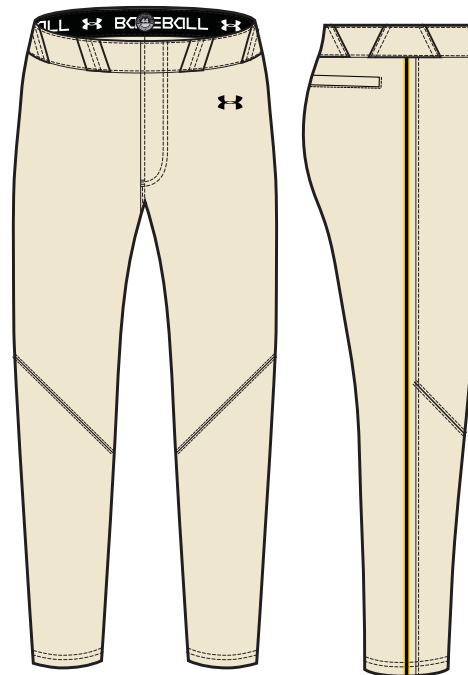


UA RECOMMENDS STRIPE 02 TO
MATCH SHEA 5 JERSEY DESIGNS



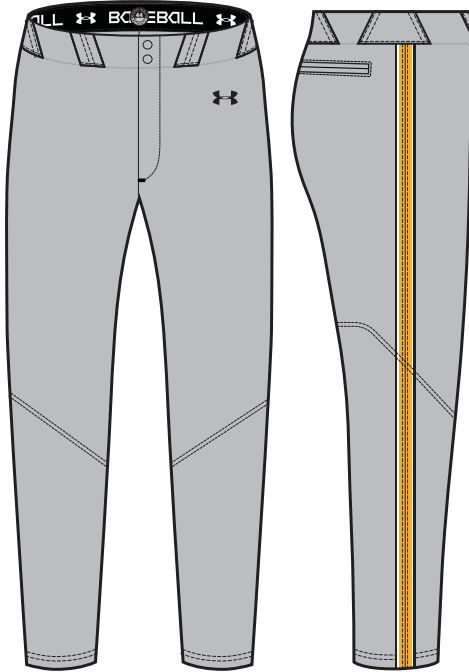
UA RECOMMENDS STRIPE 09 TO
MATCH SHEA 3 JERSEY DESIGNS

**ALL CATALOG STRIPES (01-09) ARE 2" WIDE AND
AVAILABLE FOR SOLID AND PINSTRIPE PANTS (SEE PAGE XX)
TURNER STRIPE .5" WIDE AVAILABLE FOR SOLID
AND PINSTRIPE PANTS**



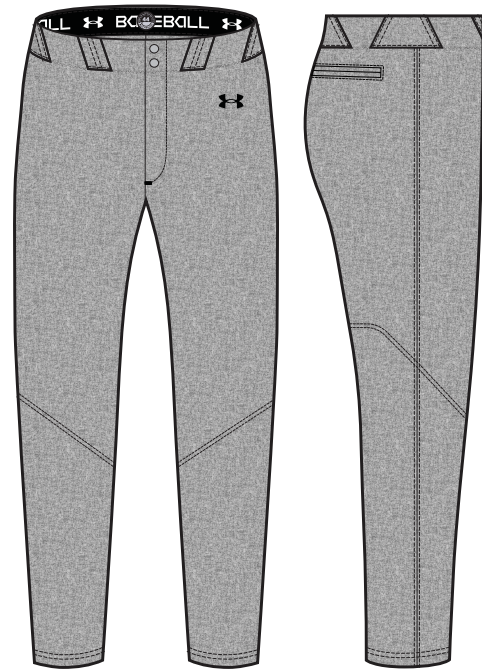
TURNER

OVERSIZED SURCHARGE +\$5 PER SIZE // EXTENDED/SHORTENED LENGTHS OFFERED, SEE PAGE 64 FOR MORE INFO



CAMDEN 5 STRIPE

NEW DESIGN FIRST SHIP: 10/26/2024



FLANNEL

NEW DESIGN FIRST SHIP: 10/26/2024



SOLID



PINSTRIPLE

OVERSIZED SURCHARGE +\$5 PER SIZE // EXTENDED/SHORTENED LENGTHS OFFERED, SEE PAGE 64 FOR MORE INFO



ARMOURFUSE® UNIFORMS // ORDERING INFORMATION AND CUSTOMER SERVICE: 1-888-871-0990 // www.underarmourteamuniforms.com

FILL-IN LIFECYCLE TIMING FOUND ON PAGE 66. DECORATION OPTIONS AND ORDERING INFORMATION ARE AVAILABLE ON PAGES 60-66.



THE VALLEY



STITCHED

AF DIAMOND SELECT FAUX PLACKET JERSEY

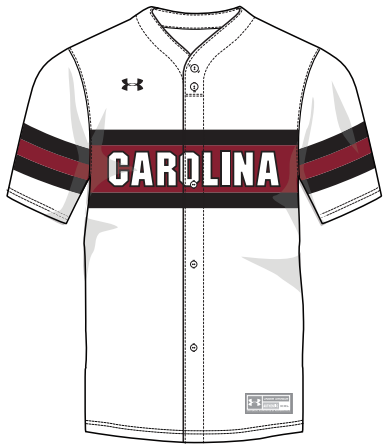
NEW NAME, SAME GREAT PRODUCT
(Previously M AF Showtime Faux Placket Jersey)

SM-2XL, OVERSIZE 3XL

| STYLE | SIZE | PACKAGE* | PRICE |
|------------|--------|---------------|----------|
| UJBX2M (M) | SM-2XL | SUBLIMATED | \$122.00 |
| | | 1-COLOR TWILL | \$171.00 |
| | | 2-COLOR TWILL | \$181.00 |

- 100% Polyester - Diamond Knit Front + Diamond Mesh Back
- Faux Placket front closure with functional top two buttons

*PACKAGE INCLUDES TEAM NAME + FRONT & BACK NUMBERS
ADDITIONAL TWILL OPTIONS FOUND ON PAGE 62



WINDMILL



COMISKY



TURNER W/ PINS



CAMDEN W/ PINS



SHEA W/ PINS

OVERSIZED SURCHARGE +\$5 PER SIZE // EXTENDED/SHORTENED LENGTHS OFFERED, SEE PAGE 64 FOR MORE INFO



TURNER

SHOWN WITH AF BASELAYER,
SEE PG 17

CAMDEN

SHOWN WITH AF BASELAYER,
SEE PG 17

SHEA

SHOWN WITH AF BASELAYER,
SEE PG 17

OVERSIZED SURCHARGE +\$5 PER SIZE // EXTENDED/SHORTENED LENGTHS OFFERED, SEE PAGE 64 FOR MORE INFO



ARMOURFUSE® UNIFORMS // ORDERING INFORMATION AND CUSTOMER SERVICE: 1-888-871-0990 // www.underarmourteamuniforms.com

FILL-IN LIFECYCLE TIMING FOUND ON PAGE 66. DECORATION OPTIONS AND ORDERING INFORMATION ARE AVAILABLE ON PAGES 60-66.

AF DIAMOND SELECT V-NECK JERSEY

NEW NAME, SAME GREAT PRODUCT
(Previously M AF Showtime V-Neck Jersey)

SM-2XL, OVERSIZE 3XL

| STYLE | SIZE | PACKAGE* | PRICE |
|------------|--------|---------------|----------|
| UJBV3M (M) | SM-2XL | SUBLIMATED | \$106.50 |
| | | 1-COLOR TWILL | \$155.50 |
| | | 2-COLOR TWILL | \$165.50 |

- 100% Polyester - Diamond Knit Front
+ Diamond Mesh Back

*PACKAGE INCLUDES TEAM NAME + FRONT & BACK NUMBERS
ADDITIONAL TWILL OPTIONS FOUND ON PAGE 62



MOONSHOT



THE DOME

STRIPES AVAILABLE IN ANY
COLOR COMBINATION



FULTON



WINDMILL



COMISKY



MURPHY W/ PINS



CAMDEN W/ PINS



SHEA W/ PINS

OVERSIZED SURCHARGE +\$5 PER SIZE // EXTENDED/SHORTENED LENGTHS OFFERED, SEE PAGE 64 FOR MORE INFO



ARMOURFUSE® UNIFORMS // ORDERING INFORMATION AND CUSTOMER SERVICE: 1-888-871-0990 // www.underarmourteamuniforms.com

FILL-IN LIFECYCLE TIMING FOUND ON PAGE 66. DECORATION OPTIONS AND ORDERING INFORMATION ARE AVAILABLE ON PAGES 60-66.



CAMDEN

SHOWN WITH AF BASELAYER,
SEE PG 17

SHEA

SHOWN WITH AF BASELAYER,
SEE PG 17

MURPHY

SHOWN WITH AF BASELAYER,
SEE PG 17

OVERSIZED SURCHARGE +\$5 PER SIZE // EXTENDED/SHORTENED LENGTHS OFFERED, SEE PAGE 64 FOR MORE INFO



ARMOURFUSE® UNIFORMS // ORDERING INFORMATION AND CUSTOMER SERVICE: 1-888-871-0990 // www.underarmourteamuniforms.com

FILL-IN LIFECYCLE TIMING FOUND ON PAGE 66. DECORATION OPTIONS AND ORDERING INFORMATION ARE AVAILABLE ON PAGES 60-66.

NEW

AF DIAMOND FULL BUTTON JERSEY

FIRST SHIP: 10/25/2024 //
SM-2XL, OVERSIZE 3XL, YSM-YXL

| STYLE | SIZE | PRICE |
|-------------|---------|----------|
| UJBIG1M (M) | SM-2XL | \$110.00 |
| UJBIG1Y (Y) | YSM-YXL | \$105.00 |

- 100% Polyester - Dimond Mesh front and sleeves for durability
- 87% Polyester, 13% Elastane - Utility Mesh full back for stretch
- Functioning Full Button Placket
- M's L: 31.5" Front Body from High Point of Shoulder
- M's L: 24" Across Chest



NEW

AF DIAMOND 2 BUTTON SLEEVELESS JERSEY

FIRST SHIP: 10/25/2024 //
SM-2XL, OVERSIZE 3XL, YSM-YXL

| STYLE | SIZE | PRICE |
|-------------|---------|----------|
| UJBIG3M (M) | SM-2XL | \$105.00 |
| UJBIG3Y (Y) | YSM-YXL | \$100.00 |

- 100% Polyester - Dimond Mesh front and sleeves for durability
- 87% Polyester, 13% Elastane - Utility Mesh full back and collar for stretch
- Functioning Top 2 Button Placket
- M's L: 31" Front Body from High Point of Shoulder
- M's L: 24" Across Chest



NEW

AF DIAMOND V-NECK JERSEY

FIRST SHIP: 10/25/2024 //
SM-2XL, OVERSIZE 3XL, YSM-YXL

| STYLE | SIZE | PRICE |
|-------------|---------|---------|
| UJBIG2M (M) | SM-2XL | \$99.00 |
| UJBIG2Y (Y) | YSM-YXL | \$94.00 |

- 100% Polyester - Dimond Mesh front and sleeves for durability
- 87% Polyester, 13% Elastane - Utility Mesh full back and collar for stretch
- Throwback Raglan sleeves for a vintage fit and feel
- M's L: 31.5" Front Body from High Point of Shoulder
- M's L: 24" Across Chest



PINSTripES TURNER TURNER PINS

OVERSIZED SURCHARGE +\$5 PER SIZE // CAN ADD +2" AND +4" BODY LENGTH, SEE PAGE 64 FOR MORE INFO



CAMDEN 3-STRIPE

CAMDEN 3-STRIPE PINS

CAMDEN 5-STRIPE

FLANNEL

OVERSIZED SURCHARGE +\$5 PER SIZE // CAN ADD +2" AND +4" BODY LENGTH, SEE PAGE 64 FOR MORE INFO



ARMOURFUSE® UNIFORMS // ORDERING INFORMATION AND CUSTOMER SERVICE: 1-888-871-0990 // www.underarmourteamuniforms.com

FILL-IN LIFECYCLE TIMING FOUND ON PAGE 66. DECORATION OPTIONS AND ORDERING INFORMATION ARE AVAILABLE ON PAGES 60-66.

ARMOURFUSE CAGE JACKET

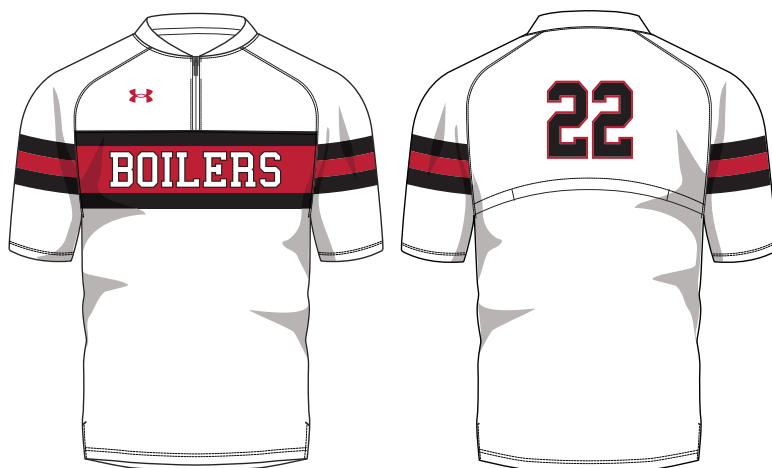
SM-2XL, OVERSIZE 3XL-4XL, YXS-YXL

| STYLE | SIZE | PRICE |
|-------------|---------|----------|
| UJBTZ1M (M) | SM-2XL | \$150.00 |
| UJBTZ1Y (Y) | YXS-YXL | \$135.00 |

- Sublimated stretch woven fabric
- 2-ply collar, vented back, side-vent at the hem to provide room for belted baseball pant
- Loose fit for shoulder mobility and to allow for wearing over a jersey
- Ability to add custom logo, team name, player name and player number



HENLEY



WINDMILL

OVERSIZED SURCHARGE +\$5 PER SIZE



ARMOURFUSE® UNIFORMS // ORDERING INFORMATION AND CUSTOMER SERVICE: 1-888-871-0990 // www.underarmourteamuniforms.com

FILL-IN LIFECYCLE TIMING FOUND ON PAGE 66. DECORATION OPTIONS AND ORDERING INFORMATION ARE AVAILABLE ON PAGES 60-66.

AF ¾ SLEEVE FITTED CREW

SM-2XL, OVERSIZE 3XL

| STYLE | SIZE | PRICE |
|------------|--------|---------|
| UJGC3M (M) | SM-2XL | \$80.50 |

• Available in SHIFT, CANDLE STICK
& SCOUT Designs



CANDLESTICK



SHIFT



SCOUT

OVERSIZED SURCHARGE +\$5 PER SIZE



ARMOURFUSE® UNIFORMS // ORDERING INFORMATION AND CUSTOMER SERVICE: 1-888-871-0990 // www.underarmourteamuniforms.com

FILL-IN LIFECYCLE TIMING FOUND ON PAGE 66. DECORATION OPTIONS AND ORDERING INFORMATION ARE AVAILABLE ON PAGES 60-66.



BASEBALL STOCK

- Unique designs and advanced technology in stock
- Pre-set designs, ready to ship
- Best-in-class stock fabrications for all levels of play



PACKAGE DECORATION

| | 1COLOR | 2COLOR |
|-------------------------------|----------------|----------------|
| SCREENPRINT | \$17.50 | \$27.50 |
| Team Name, Front/Back Numbers | | |
| TACKLE TWILL | \$49.00 | \$59.00 |
| Team Name, Front/Back Numbers | | |

Additional Stock Options on page 62-63.

ICON FAUX PLACKET JERSEY

SM-2XL, OVERSIZE 3XL, YSM-YXL

| STYLE | SIZE | PACKAGE | PRICE |
|-------------|---------|---------------|----------|
| UBJ114M (M) | SM-2XL | BLANK | \$53.00 |
| | | 1-COLOR TWILL | \$102.00 |
| | | 2-COLOR TWILL | \$112.00 |
| UBJ114Y (Y) | YSM-YXL | BLANK | \$48.00 |

• 100% Polyester - Diamond Knit Front + Diamond Mesh Back

UA RECOMMENDS THAT THIS STYLE BE DECORATED WITH TACKLE TWILL ONLY

*PACKAGE INCLUDES TEAM NAME + FRONT & BACK NUMBERS
OVERSIZED SURCHARGE +\$5 PER SIZE



WH

BG

ICON BASEBALL PANT 2.0

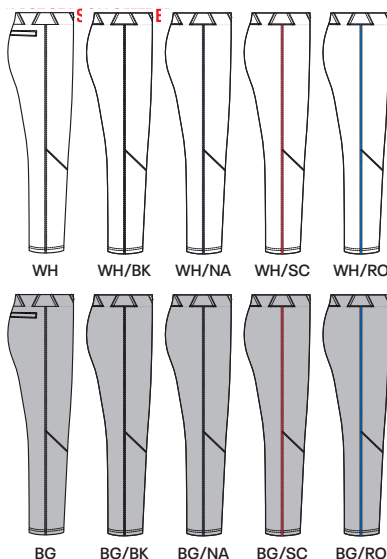
NEW DISCOUNTED PRICE

SM-2XL, OVERSIZE 3XL, YXS-YXL

| TAPERED | SIZE | FABRIC | PRICE |
|-------------|---------|------------|--------------------|
| UBP52TM (M) | SM-2XL | SOLID | \$60.00 |
| UBP52TY (Y) | YXS-YXL | SOLID | \$55.00 |
| RELAXED | SIZE | FABRIC | PRICE |
| UBP52RM (M) | SM-2XL | SOLID | \$60.00 |
| UBP52XM (M) | SM-2XL | PIPED LSO* | \$65.00 |
| UBP52RY (Y) | YXS-YXL | SOLID | \$55.00 |
| UBP52XY (Y) | YXS-YXL | PIPED LSO* | \$60.00 |

- 100% Polyester
- Updated Modern fit, including new Tapered Fit option
- 2-ply reinforced knee

PIPED PRICING INCLUDES COLORS SHOWN ABOVE IN 3/16"
OVERSIZED SURCHARGE +\$5 PER SIZE



WH

WH/BK

WH/NA

WH/SC

WH/RO

BG

BG/BK

BG/NA

BG/SC

BG/RO



IGNITE 2-BUTTON JERSEY

NEW DISCOUNTED PRICE

SM-2XL, OVERSIZE 3XL, YSM-YXL

| STYLE | SIZE | PACKAGE | PRICE |
|-------------|---------|----------------|----------------|
| UBJ113M (M) | SM-2XL | BLANK | \$35.00 |
| | | 1-COLOR SCREEN | \$52.50 |
| | | 2-COLOR SCREEN | \$62.50 |
| | | 1-COLOR TWILL | \$84.00 |
| | | 2-COLOR TWILL | \$94.00 |
| UBJ113Y (Y) | YSM-YXL | BLANK | \$30.00 |

•100% Polyester - Base Mesh

*PACKAGE INCLUDES TEAM NAME + FRONT & BACK NUMBERS
OVERSIZED SURCHARGE +\$5 PER SIZE



BK/WH/BG NA/WH/BG SC/WH/BG RO/WH/BG



DG/WH/BG MA/WH/BG PU/WH/BG OR/WH/BG

ICON KNICKER PANT

SM-2XL, OVERSIZE 3XL

| STYLE | SIZE | PACKAGE | PRICE |
|-------------|--------|---------|---------|
| UBP54KM (M) | SM-2XL | BLANK | \$53.00 |

- 100% Polyester - Diamond Knit
- Adult inseam = 18"
- 2-ply reinforced knees

AFTER-BRAID +\$17. SEE PAGE 373 FOR DETAILS
OVERSIZED SURCHARGE +\$5 PER SIZE



WH BG



IGNITE V-NECK JERSEY

SM-2XL, OVERSIZE 3XL, YSM-YXL

| STYLE | SIZE | PACKAGE | PRICE |
|-------------|---------|----------------|---------|
| UBJ112M (M) | SM-2XL | BLANK | \$38.00 |
| | | 1-COLOR SCREEN | \$55.50 |
| | | 2-COLOR SCREEN | \$65.50 |
| | | 1-COLOR TWILL | \$87.00 |
| | | 2-COLOR TWILL | \$97.00 |
| | | | |
| UBJ112Y (Y) | YSM-YXL | BLANK | \$33.00 |

•100% Polyester - Base Mesh

*PACKAGE INCLUDES TEAM NAME + FRONT & BACK NUMBERS
OVERSIZED SURCHARGE +\$5 PER SIZE



NEW YOUTH ICON PANT 2.0

YXS-YXL

| STYLE | SIZE | PACKAGE | PRICE |
|-------------|---------|---------|---------|
| UBPSTPY (Y) | YSM-YXL | BLANK | \$49.50 |

| MEASUREMENT | YXS | YSM | YMD | YLG | YXL |
|-------------|--------|-------|-----|--------|---------|
| INSEAM | 12.75" | 13.5" | 15" | 17.25" | 17.625" |



NEW

1367347

UA UTILITY PRO PIPED

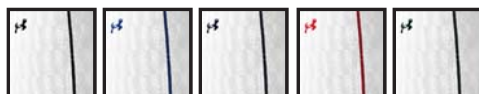
\$45.00 | FITTED | SM-2XL

FIRST SHIP: 6/20/2024

- Lightweight, durable, performance fabric built for gameday comfort
- Material wicks sweat & dries really fast
- Wider waistband with belt loops, working fly & interior silicone print to help keep your jersey in place
- Open back pockets
- Inseam: 30"

100% POLYESTER

heatgear™



100 WHT/BLK 101 WHT/RYL 102 WHT/MDN 103 WHT/RED 104 WHT/GRN



080 BBG/BLK 081 BBG/RYL 082 BBG/MDN 083 BBG/RED 075 BBG/GRN



1374374

UA UTILITY BASEBALL PANTS

\$30.00 | FITTED | SM-3XL (3XL: 15% UPCHARGE)

YOUTH: 1374381 | \$25.00 | YXS-YXL

FIRST SHIP: C/O // LAST SHIP: 6/19/2025

- Not all baseball pants are made the same. These are light enough for hot weather, but still give you the durability, stretch, and protection for a full season.
- Lightweight, durable, performance fabric built for gameday comfort
- Material wicks sweat & dries really fast
- Seven belt loops, working fly & double front enclosure
- Dual-layer knees deliver added durability
- Super-comfortable waistband stretches so you can move through your swing

100% POLYESTER

heatgear™

YOUTH OFFERED IN ALL COLORS



001 BLK/WHT 100 WHT/BLK 080 BBG/BLK



1375654

UA UTILITY BASEBALL KNICKER

\$30.00 | FITTED | SM-2XL

YOUTH: 1375659 | \$25.00 | YXS-YXL

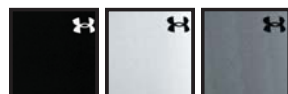
FIRST SHIP: C/O // LAST SHIP: 6/19/2025

- Not all baseball pants are made the same. These are light enough for hot weather, but still give you the durability, stretch, and protection for a full season.
- Lightweight, durable, performance fabric built for gameday comfort
- Material wicks sweat & dries really fast
- Seven belt loops, working fly & double front enclosure
- Dual-layer knees deliver added durability
- Super-comfortable waistband stretches so you can move through your swing

100% POLYESTER

heatgear™

YOUTH OFFERED IN ALL COLORS



001 BLK/WHT 100 WHT/BLK 075 BBG/BLK



1367346 UTILITY SLIDING SHORTS 21

\$35.00 | **COMPRESSION** | SM-3XL (3XL: 15% UPCHARGE)

YOUTH: 1367356 | \$30.00 | YSM-YXL

FIRST SHIP: C/O

- Universal cup pocket
- 4-way stretch Heatgear fabric
- Mesh inserts for breathability
- Padded seat for extra protection

100% POLYESTER

heatgear

YOUTH OFFERED IN ALL COLORS



100
WHT



1367355 BOY'S UTILITY PRO SLIDER W/ CUP

\$35.00 | **COMPRESSION** | YSM-YXL

FIRST SHIP: C/O

- Super-light & breathable HeatGear® fabric delivers superior coverage without weighing you down
- Material wicks sweat & dries really fast
- 4-way stretch material moves better in every direction
- Stretch-mesh gusset & panels deliver strategic ventilation
- Exposed elastic performance waistband
- Cup pocket
- Cup included
- Inseam: 6.5"

BODY: 84% POLYESTER/16% ELASTANE
MESH: 92% POLYESTER/8% ELASTANE

heatgear



100
WHT



1252084 UA M'S BASEBALL BELT

\$12.99 | OSFA, LENGTH 44" ADJUSTABLE

YOUTH: 1252085 | \$12.99
OSFA, LENGTH 41" ADJUSTABLE

FIRST SHIP: C/O

- Elastic webbing with polyurethane
- Custom UA branded belt loop

70% ELASTIC, 30% PU



APPAREL

NEW**1386952****UA M'S UTILITY PRO CAGE JACKET****\$70.00 | LOOSE | SM-3XL** (3XL: 15% UPCHARGE)**FIRST SHIP: 6/20/2024**

- UA Storm technology repels water without sacrificing breathability
- Durable, stretch-woven fabric is ultra-lightweight & lets you move
- 4-way stretch material moves better in every direction
- Back vent, underarm mesh panels & side-vent bottom hem for added breathability
- Zero-distraction hood design with no drawstring gives you full peripheral vision
- Rip stitch convertible sleeves so you can cut at the elbow seam for a short sleeve
- Open hand pockets
- Shaped hem

87% POLYESTER, 13% ELASTANE

heatgear **STORM****1367366****UA M'S YARD BASEBALL SHORT****\$40.00 | LOOSE | SM-3XL** (3XL: 15% UPCHARGE)**FIRST SHIP: C/O**

- UA Storm technology repels water without sacrificing breathability
- Ultra-lightweight, stretchy woven fabric delivers superior mobility
- Material wicks sweat & dries really fast
- Encased elastic waistband with external drawcord
- Open hand pockets
- Side notched hem

100% POLYESTER

heatgear **STORM**

1386253 UA TEAM OVER-THE-CALF UNISEX

\$14.00 | SINGLE PAIR

SM (YOUTH 13.5K-4.5 / WOMEN'S 4-6),
MD (YOUTH 4.5-7 / MEN'S 7-8.5 / WOMEN'S 6-10),
LG (MEN'S 8.5-13 / WOMEN'S 10-14), XL (MEN'S 13-16)

YOUTH: 1386254 | \$12.00

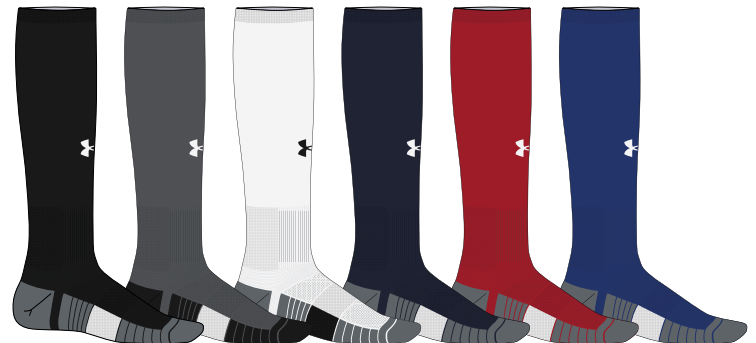
XS (10.5K-13K), SM (YOUTH 13.5K-4.5)
MD (YOUTH 4.5-7)

FIRST SHIP: 12/20/2024

- Medium cushioning throughout foot for comfort & protection
- Mesh panels on top of foot for added breathability
- Durable material wicks sweat & dries really fast
- Anti-odor technology helps prevent odor in the sock
- Embedded arch support helps reduce foot fatigue
- Fitted heel contours around your foot for a better fit
- Left/Right specific fit

96% POLYESTER, 4% ELASTANE

YOUTH OFFERED IN ALL COLORS



001 BLK/PITCH/WHT 040 GPH/PITCH/WHT 100 WHT/PITCH/BLK 410 MDN/PITCH/WHT 600 RED/PITCH/WHT 400 RYL/PITCH/WHT



301 GRN/PITCH/WHT 609 MAR/PITCH/WHT 500 PUR/PITCH/WHT 465 HOR BLUE/PITCH/WHT 750 SGD/PITCH/WHT 800 TOG/PITCH/WHT



860 DKO/PITCH/WHT 625 CRD/PITCH/WHT 305 TKG/PITCH/WHT 230 GRIDIRON/PITCH/WHT 654 TPK/PITCH/WHT 722 CTL/PITCH/WHT

NEW**3027444****UA HARPER 9 PRO TPU**

\$110.00 | SIZES: 6.5-13, 14, 15, 16

FIRST SHIP: 7/20/2024

- UA Intelliknit upper provides breathability & premium stretch & compression
- Engineered fit that increases comfort & reduces flex pressure
- Booty construction gives athlete locked in support
- Synthetic leather in forefoot gives athlete increased durability for the grind of a full season
- UA HOVR provides maximum power, stability & energy return in your swing
- Dual-density TPU outsole features 10 TPU spikes & smaller TPU nubs for superior traction on turf or dirt

**NEW****3027443****UA HARPER 9 TURF**

\$110.00 | SIZES: 6.5-13, 14, 15, 16

FIRST SHIP: 7/20/2024

- UA Intelliknit upper provides breathability & premium stretch & compression
- Engineered fit that increases comfort & reduces flex pressure
- Booty construction gives athlete locked in support
- Charged cushioning provides premium underfoot comfort for the grind of a full season
- Game ready outsole with multi length nubs for premium traction on the field

**NEW****3027453****UA HARPER 9 TPU JR**

\$65.00 | SIZES: 10K-13K, 1-6

FIRST SHIP: 7/20/2024

- Synthetic upper is light, breathable & super-durable
- Strategic design for increased ease of entry
- Full-length EVA midsole for underfoot cushioning & comfort
- Lightweight, molded TPU cleat provides premium comfort & superior traction on turf & dirt



3025592 UA YARD LOW MT

\$100.00 | SIZES: 6.5-14, 15, 16

FIRST SHIP: C/O

- Elevated plush pocket in heel for added comfort and locked in feel
- TPU Cage increases stability for lateral movements
- Charged Cushioning midsole converts impact into explosive speed & power on the diamond
- Engineered textile in vamp creates sneaker like comfort, breathability, and flexibility
- UA Microtips technology provides comfort, more traction & less weight underfoot
- 10 strategically placed cleats on perimeter for more points of ground contact to reduce cleat pressure
- Medial, Lateral and toe-box perf holes for increased breathability
- Durable toe cap overlay for maximum protection
- Lightweight molded ortholite sockliner maintains compression set for long-lasting comfort & traction



3027447 UA LEADOFF LOW RM 3.0

\$40.00 | SIZES: 6.5-13, 14, 15

YOUTH: 3027455 | \$30.00 | 8-13K, 1-6

FIRST SHIP: C/O

- Synthetic upper is lightweight and durable
- Padded collar & heel construction for ultimate step-in comfort
- Full length EVA midsole for added comfort, cushioning that evenly distributes cleat pressure underfoot
- Rubber molded cleats provide optimal traction & durability on all field surfaces

Y = YOUTH OFFERING



NEW**1385423****UA HARPER PRO GLOVES 24****\$55.00 | COMES IN PAIRS | SM-2XL****FIRST SHIP: 12/20/2024 // LAST SHIP: 6/19/2025**

- Perforated sheepskin leather for durability & breathability on back of hand
- Extended palm wrapover construction to increase grip on the bat handle
- Sheepskin leather with dragon skin print on the palm to maximize comfort, durability & bat feel
- Double knit emboss on back of hand for added texture & durability
- Integrated cuff with patent-pending full wrap closure for superior wrist support & lockdown adjustability

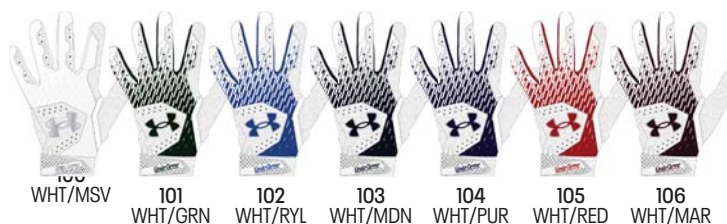
53% SHEEP LEATHER, 23% NYLON,
12% POLYESTER, 9% RUBBER, 3% ELASTANE

**1378764****UA CLEAN UP****\$30.00 | COMES IN PAIRS | SM-2XL****YOUTH: 1378766 | \$25.00 | YSM-YLG****FIRST SHIP: C/O**

- Synthetic palm provides durability & grip
- Built with HeatGear® fabric to keep your hands cool, dry & light all game
- Synthetic overlays add support in all the right places
- Perforations built over the fingers for extra breathability
- Adjustable elastic wrist cuffs provide support & a locked-in, powerful feel

87% NYLON, 13% ELASTANE

Y = YOUTH OFFERING



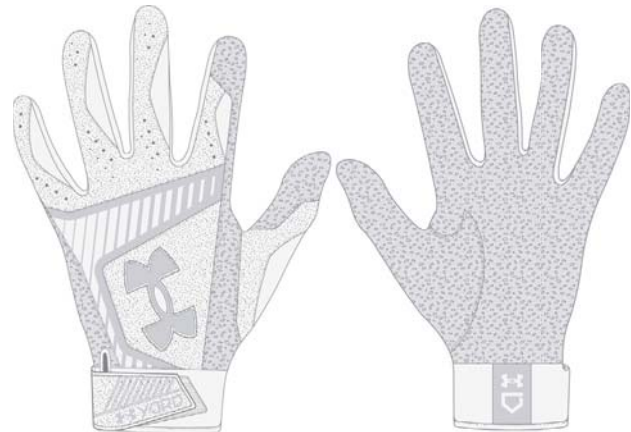
1378759 UA YARD 9

\$50.00 | COMES IN PAIRS | SM-2XL

FIRST SHIP: C/O

- Premium embossed leather palm for ultimate feel
- Lightweight, stretchy HeatGear® fabric on back of hand with leather overlays for added support
- Perforations on fingers for strategic ventilation
- Stretchy neoprene wrist with adjustable leather strap provides extended wrist support

BACK OF HAND: 87% NYLON, 13% ELASTANE
PALM & OVERLAYS: 100% LEATHER



1378758 UA YARD 9 STARS & STRIPES

\$55.00 | COMES IN PAIRS | SM-2XL

FIRST SHIP: C/O

- Premium embossed leather palm for ultimate feel
- Lightweight, stretchy HeatGear® fabric on back of hand with leather overlays for added support
- Perforations on fingers for strategic ventilation
- Stretchy neoprene wrist with adjustable leather strap provides extended wrist support

BACK OF HAND: 87% NYLON, 13% ELASTANE
PALM & OVERLAYS: 100% LEATHER



100
WHT/RED/MGD

NEW

1384464

UA YARD BACKPACK 2.0

\$90.00

FIRST SHIP: 12/20/2024

- UA Storm technology delivers an element-battling, highly water-resistant finish
- Large main compartment opening with mesh zipper & slip pockets
- Front zip pocket for essential item storage
- Built-in fence hook for on field organization
- Shoe compartment on front fits up to size 14 pair of cleats
- Adjustable, removable UA Strap Clip™ on shoulder to prevent duffle bag from falling off when carrying both
- Bat slip pocket for secure storage on both sides of the bag
- Water bottle pocket with elastic gusset to fit up to a 32oz bottle
- Top grab handle & sternum clip
- D-ring attachment point so you can clip anything with a carabiner on for easy transport

STORM



001
BLK/MSV



035
STL/MSV



410
MDN/MSV



600
RED/RYL/MGD

1369318

UA UTILITY PRINT BATPACK

\$65.00

FIRST SHIP: C/O

- UA Storm technology delivers an element-battling, highly water-resistant finish
- Foam padded back panel for enhanced comfort & breathability
- Soft tricot-lined front valuables pocket & a hook & loop section for batting glove storage
- Built-in fence hook for on field organization
- Airvent shoe compartment on front is embroidery compatible for customization
- Second bag strap clip for multiple ways to carry
- Large capacity holds 4 bats, cleats, batting gloves, valuables, gloves & water bottle

STORM



002
BLK/MGD



003
BLK/WHT



036
STL/MGD



602
RED/WHT



403
RYL/WHT



411
MDN/MGD

1365313 UA ACE2 T-BALL BATPACK

\$40.00

FIRST SHIP: C/O

- UA Storm technology delivers an element-battling, highly water-resistant finish
- Foam padded back panel for enhanced comfort & breathability
- Soft tricot-lined front valuables pocket & a hook & loop section for batting glove storage
- Built-in fence hook for on field organization
- Airvent shoe compartment on front is embroidery compatible for customization
- Small capacity holds 2 bats, cleats, batting gloves, valuables, gloves & water bottle
- Ideal size for ages 4-7
- Top grab handle

STORM



1365312 UA BASEBALL WHEELED BAG

\$150.00

FIRST SHIP: C/O

- UA Storm technology delivers an element-battling, highly water-resistant finish
- Multiple options on the go including shoulder straps, grab handles, wheels
- Big enough for even catcher's gear, with separate compartments for your helmet and cleats
- Side panel is completely removable for team or player embellishment
- Separate storage for up to 6 bats

STORM



003
BLK/WHT

UA700

STRETCH FIT AIRVENT™ PERFORMANCE CAP

FIRST SHIP: C/O

NO SET UP OR TAPE CHARGE | 18 PC MINIMUM

- Breathable Perforation
- Moisture Absorbing & Quick Drying
- Pro or Low Pro Shape
- Flat or Precurved Bill
- Traditional or X-Peak

UA AIRVENT™

4-6 WEEKS FROM ART APPROVAL

ALSO AVAILABLE IN FITTED STYLE: UA704

ALSO AVAILABLE IN STOCK STYLE: UAB404

STRETCH FIT CONVERSION CHART

| | | |
|----|-----------------|-------------------|
| XS | 6 1/2" - 6 3/4" | 20 1/2" - 21 1/2" |
| S | 6 7/8" - 7 1/8" | 21 3/4" - 22 3/8" |
| M | 7 1/8" - 7 3/8" | 22 3/8" - 23 1/4" |
| L | 7 3/8" - 7 5/8" | 23 1/4" - 24" |
| XL | 7 5/8" - 8" | 24" - 25 1/4" |

| | | | | | | | | | |
|----------------|--------|-----------------|----------------|---------------|------------------|-----------------|----------------|---------------|---------------|
| BASEBALL GREY | BLACK | CLEVELAND BROWN | CARDINAL | CAROLINA BLUE | DARK ORANGE | FOREST GREEN | GRAPHITE | MAROON | MIDNIGHT NAVY |
| POWDERKEG BLUE | PURPLE | ROYAL | STEELTOWN GOLD | TAXI | TEAM KELLY GREEN | TEAM VEGAS GOLD | UNIVERSITY RED | VINTAGE WHITE | WHITE |



UA654

RESISTOR PERFORMANCE PERFORATED CAP

FIRST SHIP: C/O

NO SET UP OR TAPE CHARGE | 18 PC MINIMUM

- Perforated Back Panels
- Lightweight, Super Comfortable
- Moisture Absorbing & Quick Drying
- Pro or Low Pro Shape
- Flat or Precurved Bill
- Traditional or X-Peak

RESISTOR PERFORMANCE FABRIC

- 4-6 WEEKS FROM ART APPROVAL
- ALSO AVAILABLE IN STRETCH FIT STYLE: UA650
- ALSO AVAILABLE IN STOCK STYLE: UAB401

FITTED FIT CONVERSION CHART

| | | | |
|------------------|------------------|------------------|------------------|
| 6 5/8" - 20 3/4" | 6 3/4" - 21 1/2" | 6 7/8" - 21 3/4" | 7" - 22" |
| 7 1/8" - 22 3/8" | 7 1/4" - 22 3/4" | 7 3/8" - 23 1/4" | 7 1/2" - 22 5/8" |
| 7 5/8" - 24" | 7 3/4" - 24 3/8" | 8" - 25 1/4" | |

| | | | | | | | | |
|---------------|----------------|----------|---------------|----------------|------------------|-----------------|----------------|---------------|
| BASEBALL GREY | BLACK | CARDINAL | CAROLINA BLUE | DARK ORANGE | FOREST GREEN | GRAPHITE | MAROON | MIDNIGHT NAVY |
| OLD GOLD | POWDERKEG BLUE | PURPLE | ROYAL | STEELTOWN GOLD | TEAM KELLY GREEN | TEAM VEGAS GOLD | UNIVERSITY RED | WHITE |



UA600 RESISTOR PERFORMANCE CAP

FIRST SHIP: C/O

NO SET UP OR TAPE CHARGE | 18 PC MINIMUM

- Water Repellent
- Lightweight, Super Comfortable
- Moisture Absorbing & Quick Drying
- Pro or Low Pro Shape
- Flat or Precurved Bill
- Traditional or X-Peak

RESISTOR PERFORMANCE FABRIC

- 4-6 WEEKS FROM ART APPROVAL
- ALSO AVAILABLE IN FITTED STYLE: UA604
- ALSO AVAILABLE IN STOCK STYLE: UAB400

STRETCH FIT CONVERSION CHART

| | | |
|----|-----------------|-------------------|
| XS | 6 1/2" - 6 3/4" | 20 1/2" - 21 1/2" |
| S | 6 7/8" - 7 1/8" | 21 3/4" - 22 3/8" |
| M | 7 1/8" - 7 3/8" | 22 3/8" - 23 1/4" |
| L | 7 3/8" - 7 5/8" | 23 1/4" - 24" |
| XL | 7 5/8" - 8" | 24" - 25 1/4" |

| | | | | | | | | |
|---------------|----------------|----------|---------------|----------------|------------------|-----------------|----------------|---------------|
| | | | | | | | | |
| BASEBALL GREY | BLACK | CARDINAL | CAROLINA BLUE | DARK ORANGE | FOREST GREEN | GRAPHITE | MAROON | MIDNIGHT NAVY |
| | | | | | | | | |
| OLD GOLD | POWDERKEG BLUE | PURPLE | ROYAL | STEELTOWN GOLD | TEAM KELLY GREEN | TEAM VEGAS GOLD | UNIVERSITY RED | WHITE |



UA504 WOOL PERFORMANCE CAP

FIRST SHIP: C/O

NO SET UP OR TAPE CHARGE | 18 PC MINIMUM

- Wool with Modern Performance Properties
- Lightweight & Moisture Wicking
- Pro or Low Pro Shape
- Flat or Precurved Bill
- Traditional or X-Peak

WOOL PERFORMANCE FABRIC

- 4-6 WEEKS FROM ART APPROVAL
- ALSO AVAILABLE IN STRETCH FIT STYLE: UA500

FITTED FIT CONVERSION CHART

| | | | |
|------------------|------------------|------------------|------------------|
| 6 5/8" - 20 3/4" | 6 3/4" - 21 1/2" | 6 7/8" - 21 3/4" | 7" - 22" |
| 7 1/8" - 22 3/8" | 7 1/4" - 22 3/4" | 7 3/8" - 23 1/4" | 7 1/2" - 22 5/8" |
| 7 5/8" - 24" | 7 3/4" - 24 3/8" | 8" - 25 1/4" | |

| | | | | | | | | | |
|----------------|--------|----------|----------------|-------------|------------------|-----------------|--------------|----------------|----------|
| | | | | | | | | | |
| BASEBALL GREY | BLACK | CARDINAL | CAROLINA BLUE | DARK ORANGE | FOREST GREEN | GRAPHITE | MAROON | MIDNIGHT NAVY | OLD GOLD |
| | | | | | | | | | |
| POWDERKEG BLUE | PURPLE | ROYAL | STEELTOWN GOLD | TEAL | TEAM KELLY GREEN | TEAM VEGAS GOLD | TEXAS ORANGE | UNIVERSITY RED | WHITE |



UA908 OSFM AIRVENT™ PERFORMANCE CAP

FIRST SHIP: C/O

NO SET UP OR TAPE CHARGE | 18 PC MINIMUM

- UA AirVent™ Performance Fabric
- Breathable Perforation
- Moisture Absorbing and Quick Drying
- UA Performance Sweatband
- Traditional or X-Peak

UA AIRVENT™

4-6 WEEKS FROM ART APPROVAL

ALSO AVAILABLE IN STOCK STYLE: UAB421

ONE SIZE FITS MOST



UA815 OSFM AIRVENT™ PERFORMANCE VISOR

FIRST SHIP: C/O

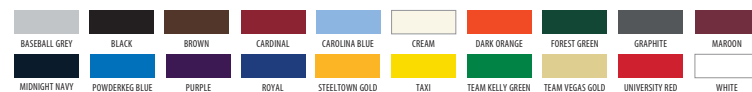
NO SET UP OR TAPE CHARGE | 18 PC MINIMUM

- UA AirVent™ Performance Fabric
- Breathable Perforation
- Moisture Absorbing and Quick Drying
- UA Performance Sweatband
- Traditional or X-Peak

UA AIRVENT™

4-6 WEEKS FROM ART APPROVAL

ONE SIZE FITS MOST



UAB421

OSFM AIRVENT™ PERFORMANCE CAP

\$23.00

FIRST SHIP: C/O

NO SET UP OR TAPE CHARGE | 12 PC MINIMUM

- Breathable Perforation
- Moisture Absorbing & Quick Drying
- Unstructured Shape
- Precurved Bill
- Slide Buckle Closure

UA AIRVENT™

2 WEEKS FROM ART APPROVAL (BLANKS SHIP IN 24-48 HOURS)

ONE SIZE FITS MOST



UAB420

GARMENT WASHED TWILL CAP

\$20.00

FIRST SHIP: C/O

NO SET UP OR TAPE CHARGE | 12 PC MINIMUM

- Unstructured Shape
- Precurved Bill
- Slide Buckle Closure

GARMENT WASHED TWILL

2 WEEKS FROM ART APPROVAL (BLANKS SHIP IN 24-48 HOURS)

ONE SIZE FITS MOST



UAB400 RESISTOR PERFORMANCE CAP

\$26.00

FIRST SHIP: C/O

NO SET UP OR TAPE CHARGE | 12 PC MINIMUM

- Water Repellent
- Lightweight, Super Comfortable
- Moisture Absorbing & Quick Drying
- Pro Shape
- Flat Bill

RESISTOR PERFORMANCE FABRIC

2 WEEKS FROM ART APPROVAL (BLANKS SHIP IN 24-48 HOURS)

STRETCH FIT CONVERSION CHART

| | | |
|----|-----------------|-------------------|
| XS | 6 1/2" - 6 3/4" | 20 1/2" - 21 1/2" |
| S | 6 7/8" - 7 1/8" | 21 3/4" - 22 3/8" |
| M | 7 1/8" - 7 3/8" | 22 3/8" - 23 1/4" |
| L | 7 3/8" - 7 5/8" | 23 1/4" - 24" |
| XL | 7 5/8" - 8" | 24" - 25 1/4" |



UAB401 RESISTOR PERFORMANCE PERFORATED CAP

\$29.00

FIRST SHIP: C/O

NO SET UP OR TAPE CHARGE | 12 PC MINIMUM

- Perforated Back Panels
- Lightweight, Super Comfortable
- Moisture Absorbing & Quick Drying
- Pro Shape
- Flat Bill

RESISTOR PERFORMANCE FABRIC

2 WEEKS FROM ART APPROVAL (BLANKS SHIP IN 24-48 HOURS)

STRETCH FIT CONVERSION CHART

| | | |
|----|-----------------|-------------------|
| XS | 6 1/2" - 6 3/4" | 20 1/2" - 21 1/2" |
| S | 6 7/8" - 7 1/8" | 21 3/4" - 22 3/8" |
| M | 7 1/8" - 7 3/8" | 22 3/8" - 23 1/4" |
| L | 7 3/8" - 7 5/8" | 23 1/4" - 24" |
| XL | 7 5/8" - 8" | 24" - 25 1/4" |



UAB403

ARMOUR CHOICE PERFORMANCE MESHBACK CAP

\$25.00

FIRST SHIP: C/O

NO SET UP OR TAPE CHARGE | 12 PC MINIMUM

- Birdseye Polyester, Bamboo & Charcoal Blend
- Bacteria & Odor Resistant
- Lightweight, Moisture Absorbing & Quick Drying
- Pro Shape
- Flat Bill

ARMOUR CHOICE FABRIC

2 WEEKS FROM ART APPROVAL (BLANKS SHIP IN 24-48 HOURS)

STRETCH FIT CONVERSION CHART

| | | |
|----|-----------------|-------------------|
| XS | 6 1/2" - 6 3/4" | 20 1/2" - 21 1/2" |
| S | 6 7/8" - 7 1/8" | 21 3/4" - 22 3/8" |
| M | 7 1/8" - 7 3/8" | 22 3/8" - 23 1/4" |
| L | 7 3/8" - 7 5/8" | 23 1/4" - 24" |
| XL | 7 5/8" - 8" | 24" - 25 1/4" |



UAB404

AIRVENT™ PERFORMANCE CAP

\$25.00

FIRST SHIP: C/O

NO SET UP OR TAPE CHARGE | 12 PC MINIMUM

- Breathable Perforation
- Moisture Absorbing & Quick Drying
- UA Performance Sweatband
- Pro Shape
- Flat Bill

UA AIRVENT™

2 WEEKS FROM ART APPROVAL (BLANKS SHIP IN 24-48 HOURS)

STRETCH FIT CONVERSION CHART

| | | |
|----|-----------------|-------------------|
| XS | 6 1/2" - 6 3/4" | 20 1/2" - 21 1/2" |
| S | 6 7/8" - 7 1/8" | 21 3/4" - 22 3/8" |
| M | 7 1/8" - 7 3/8" | 22 3/8" - 23 1/4" |
| L | 7 3/8" - 7 5/8" | 23 1/4" - 24" |
| XL | 7 5/8" - 8" | 24" - 25 1/4" |



UAB422 OSFM TRUCKER MESH

\$18.00

FIRST SHIP: C/O

NO SET UP OR TAPE CHARGE | 12 PC MINIMUM

- Comfort Twill Front
- Trucker Mesh Back
- Mid Crown Shape
- Slight Curved Bill

COTTON TWILL

2 WEEKS FROM ART APPROVAL (BLANKS SHIP IN 24-48 HOURS)

ONE SIZE FITS MOST



UAB402 STRETCH FIT ARMOUR CHOICE CAP

\$25.00

FIRST SHIP: C/O

NO SET UP OR TAPE CHARGE | 12 PC MINIMUM

- Birdseye Polyester, Bamboo & Charcoal Blend
- Lightweight, Moisture Absorbing & Quick Drying
- Bacteria Resistant and Odor Resistant
- UA Performance Sweatband
- Precurved Bill

ARMOUR CHOICE FABRIC

2 WEEKS FROM ART APPROVAL (BLANKS SHIP IN 24-48 HOURS)

STRETCH FIT CONVERSION CHART

| | | |
|----|-----------------|-------------------|
| XS | 6 1/2" - 6 3/4" | 20 1/2" - 21 1/2" |
| S | 6 7/8" - 7 1/8" | 21 3/4" - 22 3/8" |
| M | 7 1/8" - 7 3/8" | 22 3/8" - 23 1/4" |
| L | 7 3/8" - 7 5/8" | 23 1/4" - 24" |
| XL | 7 5/8" - 8" | 24" - 25 1/4" |



UAB440 AIRVENT™ PERFORMANCE VISOR

\$23.00

FIRST SHIP: C/O, *NEW COLORS: 9/1/2024

NO SET UP OR TAPE CHARGE | 12 PC MINIMUM

- Breathable Perforation
- Moisture Absorbing & Quick Drying
- Velcro Closure

UA AIRVENT™

2 WEEKS FROM ART APPROVAL (BLANKS SHIP IN 24-48 HOURS)

ONE SIZE FITS MOST



UAB450 OSFM AIRVENT™ PERFORMANCE BOONIE

\$40.00

FIRST SHIP: C/O

NO SET UP OR TAPE CHARGE | 12 PC MINIMUM

- UA AirVent™ Performance Fabric
- Breathable Perforation
- Moisture Absorbing and Quick Drying
- UA Performance Sweatband
- Self-Fabric Drawstring & Plastic Pull-Tab

UA AIRVENT™

2 WEEKS FROM ART APPROVAL (BLANKS SHIP IN 24-48 HOURS)

ONE SIZE FITS MOST



TEAM HEADWEAR

1376702**UA TEAM BLITZING**

\$28.00 | S/M, M/L, L/XL, XL/XXL

FIRST SHIP: C/O

- UA Classic Fit: pre-curved visor & structured front panels that maintains shape with a low profile fit
- Breathable, textured knit fabric is super-soft for all day comfort
- Built-in, stretchy elastic sweatband wicks away sweat to keep you cool & dry
- Stretch construction provides a comfortable fit
- One embroidered side logo

100% POLYESTER

001
BLK/WHT100
WHT/BLK040
GPH/BLK410
MDN/WHT**1369785****UA TEAM BLANK CHINO ADJ**

\$20.00 | OSFM

FIRST SHIP: C/O

- Unstructured curved visor adjustable cap
- Performance chino fabrication
- Jacquard Twill UA Logo Patch on wearers back left side

65% POLYESTER, 35% COTTON

001
BLK/WHT100
WHT/BLK012
PITCH GRY/BLK410
MDN/PITCH GRY600
RED/BLK400
RYL/BLK

This image shows a full page of blank, lined paper. It features approximately 28 horizontal blue or grey lines spaced evenly apart, typical of notebook paper. The lines extend across the entire width of the page, leaving small margins at the top and bottom. There are no vertical lines, text, or other markings on the page.

NEW**YARD DUAL****FIRST SHIP: C/O**

- SPECIFIC SKU: UA Polarized lenses eliminate glare for clearer vision & reduced eye fatigue without color distortion
- SPECIFIC SKU: UA Tuned™ Baseball lenses provide contrast enhancement to spot & track the ball more precisely
- Fully-adjustable UA ArmourGrip nose pads have a lasered engraving for ultimate comfort & stability
- Meets ANSI Z87.1 industrial standards for high-mass & high-velocity impact protection
- Injected front & rubber non-slip temples keep the frames lightweight & firmly on your head
- TR90 frames are durable, flexible, hypoallergenic & impact-resistant
- Auto-lock stop hinge allows the temples to lock securely in place for a sturdy fit
- Water & smudge resistant lens coating
- Temple tip holes for easy paring with most lanyards
- All UA Eyewear defends against 100% of harmful UVA/B/C rays
- 3 year warranty against any material or manufacturing defects

POLARIZED

205644807766C

CORE

20564400376KA

MIRROR

20564409V76W1



20564463M76V8



20564484J76B3



205644NIC76PC

TUNED BASEBALL

205644WWK76W1

| POLARIZED | DESCRIPTION | PRICE |
|----------------|--|----------|
| 205644807766C | MATTE BLACK FRAME WITH GRAY POLARIZED LENSES | \$120.00 |
| CORE | DESCRIPTION | PRICE |
| 20564400376KA | MATTE BLACK FRAME WITH GRAY LENSES | \$90.00 |
| MIRROR | DESCRIPTION | PRICE |
| 20564409V76W1 | MATTE METALLIC DOWNPOUR GRAY FRAME WITH LIGHT BLUE MIRROR LENSES | \$90.00 |
| 20564463M76V8 | MATTE TRANSPARENT PITCH GRAY FRAME WITH EMERALD MIRROR LENSES | \$90.00 |
| 20564484J76B3 | SHINY BLACK FRAME WITH INFRARED MIRROR LENSES | \$90.00 |
| 205644NIC76PC | SHINY WHITE FRAME WITH BRIGHT PURPLE MIRROR LENSES | \$90.00 |
| TUNED BASEBALL | DESCRIPTION | PRICE |
| 205644WWK76W1 | MATTE WHITE FRAME WITH BASEBALL TUNED BLUE MIRROR LENSES | \$100.00 |

UA SKILLZ

FIRST SHIP:C/O

- SPECIFIC SKU: UA Polarized lenses eliminate glare for clearer vision & reduced eye fatigue without color distortion
- SPECIFIC SKU: Mirror coating offers improved sun protection, durability & scratch resistance
- SPECIFIC SKU: UA Tuned™ Baseball lenses provide contrast enhancement to spot & track the ball more precisely
- Fully-adjustable UA ArmourGrip nose pads have a lasered engraving for ultimate comfort & stability
- Meets ANSI Z87.1 industrial standards for high-mass & high-velocity impact protection
- Injected front & temples with non-slip rubber trim keeps the frames on your head
- TR90 frames are durable, flexible, hypoallergenic & impact-resistant
- Auto-lock stop hinge allows the temples to lock securely in place for a sturdy fit
- Water- & smudge-resistant coating makes the lenses easier to clean with clearer optics
- Maximum lens coverage shields your eyes with ultimate UV A/B protection in all directions

| POLARIZED | DESCRIPTION | PRICE |
|----------------|---|----------|
| 20662506W806C | MATTE BLACK FRAME WITH GRAY POLARIZED LENSES | \$120.00 |
| CORE | DESCRIPTION | PRICE |
| 20662500380KA | MATTE BLACK FRAME WITH GRAY LENSES | \$90.00 |
| MIRROR | DESCRIPTION | PRICE |
| 2066254WC80B3 | MATTE METALLIC GUNMETAL FRAME WITH INFRARED MIRROR LENSES | \$90.00 |
| 2066257JX802B | MATTE WHITE FRAME WITH GOLD MIRROR LENSES | \$90.00 |
| TUNED BASEBALL | DESCRIPTION | PRICE |
| 206625HYM80W1 | MATTE WHITE FRAME WITH BASEBALL TUNED BLUE MIRROR LENSES | \$100.00 |

POLARIZED



20662506W806C

CORE



20662500380KA

MIRROR



2066254WC80B3



2066257JX802B

TUNED BASEBALL



206625HYM80W1

NEW**DEFINE****FIRST SHIP: 8/1/2024**

- Mirror coating offers improved sun protection, durability & scratch resistance (All SKU's)
- Built-in rubber nose pads lay flush to prevent hair snagging or pulling when wearing on your head
- Injected front & temples with non-slip rubber trim keeps the frames on your head
- TR90 frames are durable, flexible, hypoallergenic & impact-resistant
- Auto-lock stop hinge allows the temples to lock securely in place for a sturdy fit
- Temple Tip Holes for easy Pairing with most lanyards
- All UA Eyewear Protects against 100% of Harmful UV A/B Rays
- 3 year warranty against any material or manufacturing defects

| MIRROR | DESCRIPTION | PRICE |
|---------------|---|----------|
| 2071845BF99T5 | MATTE IRIDESCENT PETROL FRAME WITH GREEN/BLUE MULTI-LAYER MIRROR LENSES | \$100.00 |
| 2071847JX99VP | MATTE WHITE FRAME WITH GOLD MIRROR LENSES | \$100.00 |
| 2071841JZ99Z9 | MATTE TRANSPARENT LAVISH FRAME WITH GREEN MULTI-LAYER MIRROR LENSES | \$100.00 |
| 2071843H29934 | SHINY BLACK FRAME WITH BRIGHT PINK MIRROR LENSES | \$100.00 |

MIRROR

2071845BF99T5



2071847JX99VP



2071841JZ99Z9



2071843H29934

UA HUSTLE**FIRST SHIP: C/O**

- Rubber nose pads for ultimate comfort
- Injected front & temples with non-slip rubber trim keeps the frames on your head
- TR90 frames are durable, flexible, hypoallergenic & impact-resistant
- Auto-lock stop hinge allows the temples to lock securely in place for a sturdy fit
- Adjustable temples auto-form around your head for a gentle grip & custom fit
- All UA Eyewear defends against 100% of harmful UVA/B/C rays
- 3 year warranty against any material or manufacturing defects

| POLARIZED | DESCRIPTION | PRICE |
|---------------|--|----------|
| 20409000357M9 | MATTE BLACK FRAME WITH POLARIZED GREY LENSES | \$110.00 |
| 20409001T57JY | MATTE BLACK FRAME WITH BLUE MIRROR POLARIZED LENSES | \$120.00 |
| CORE | DESCRIPTION | PRICE |
| 20409080757KU | SHINY BLACK FRAME WITH BLUE LENSES | \$80.00 |
| MIRROR | DESCRIPTION | PRICE |
| 204090RC257UZ | MATTE BLACK FRAME WITH ORANGE MIRROR LENSES | \$90.00 |
| 204090MNG57Z9 | SHINY CRYSTAL FRONT, GREY HAVANA TEMPLE FRAME WITH GREEN MIRROR LENSES | \$90.00 |
| TUNED GOLF | DESCRIPTION | PRICE |
| 20409008A57V8 | SHINY BLACK FRAME WITH GREEN-BLUE GOLF TUNED LENSES | \$100.00 |

POLARIZED

20409000357M9



20409001T57JY

CORE

20409080757KU

MIRROR

204090RC257UZ



204090MNG57Z9

TUNED GOLF

20409008A57V8

UA GAMEDAY

FIRST SHIP:C/O

- Fully-adjustable UA ArmourGrip nose pads have a lasered engraving for ultimate comfort & stability
- Injected front & temples with non-slip rubber trim keeps the frames on your head
- TR90 frames are durable, flexible, hypoallergenic & impact-resistant
- Auto-lock stop hinge allows the temples to lock securely in place for a sturdy fit
- Water & smudge-resistant coating makes the lenses easier to clean with clearer optics
- Comes with a soft microfiber pouch to keep your eyewear clean & protected
- All UA Eyewear Protects against 100% of Harmful UV A/B Rays
- 3 Year Warranty against any material or manufacturing defects

| CORE | DESCRIPTION | PRICE |
|----------------|--|---------|
| 20476280799KA | SHINY BLACK FRAME WITH GRAY LENS | \$80.00 |
| MIRROR | DESCRIPTION | PRICE |
| 2047620039950 | MATTE BLACK FRAME WITH ORANGE MIRROR LENS | \$80.00 |
| 20476263M99QI | MATTE TRANSPARENT CONCRETE FRAME WITH SILVER MIRROR LENS | \$80.00 |
| 2047621UZ99Z9 | MATTE TRANSPARENT LAVISH FRAME WITH GREEN/PURPLE MULTI-LAYER MIRROR LENSES | \$80.00 |
| 2047622QU99JO | MATTE KHAKI BASE FRAME WITH DARK GOLD MIRROR LENSES | \$80.00 |
| TUNED BASEBALL | DESCRIPTION | PRICE |
| 204762WWK99W1 | MATTE WHITE FRAME WITH TUNED BLUE BASEBALL LENS | \$90.00 |

CORE



20476280799KA

MIRROR



2047620039950



20476263M99QI



2047621UZ99Z9

NEW



2047622QU99JO

NEW

TUNED BASEBALL



204762WWK99W1

UA YARD PRO

FIRST SHIP:C/O

- SPECIFIC SKU: UA Tuned™ Baseball lenses provide contrast enhancement to spot & track the ball more precisely
- Fully-adjustable UA ArmourGrip nose pads have a lasered engraving for ultimate comfort & stability
- Meets ANSI Z87.1 industrial standards for high-mass & high-velocity impact protection
- Injected front & rubber non-slip temples keep the frames lightweight & firmly on your head
- TR90 frames are durable, flexible, hypoallergenic & impact-resistant
- Auto-lock stop hinge allows the temples to lock securely in place for a sturdy fit
- Water & smudge resistant lens coating
- Temple tip holes for easy paring with most lanyards
- All UA Eyewear defends against 100% of harmful UVA/B/C rays
- 3 year warranty against any material or manufacturing defects

| MIRROR | DESCRIPTION | PRICE |
|----------------|---|----------|
| 2056430IE99V8 | MATTE TRANSPARENT LIME SURGE FRAME WITH EMERALD MULTI-LAYER MIRROR LENSES | \$100.00 |
| 205643D5199W1 | SHINY BLACK FRAME WITH BLUE MULTI-LAYER MIRROR LENSES | \$100.00 |
| 205643ZE399B3 | MATTE MIDNIGHT NAVY FRAME WITH INFRARED MULTI-LAYER MIRROR LENSES | \$100.00 |
| TUNED BASEBALL | DESCRIPTION | PRICE |
| 2056436HT9950 | MATTE WHITE FRAME WITH BASEBALL TUNED ORANGE MIRROR LENSES | \$110.00 |
| 205643WWK99W1 | MATTE WHITE FRAME WITH BASEBALL TUNED BLUE MIRROR LENSES | \$110.00 |

MIRROR



2056430IE99V8



205643D5199W1



205643ZE399B3

TUNED BASEBALL



2056436HT9950



205643WWK99W1

UA LEVEL UP

FIRST SHIP:C/O

- SPECIFIC SKU: Mirror coating offers improved sun protection, durability & scratch resistance
- SPECIFIC SKU: UA Tuned™ Baseball lenses provide contrast enhancement to spot & track the ball more precisely
- Fully-adjustable UA ArmourGrip nose pads have a lasered engraving for ultimate comfort & stability
- Meets ANSI Z87.1 industrial standards for high-mass & high-velocity impact protection
- Injected front & temples with non-slip rubber trim keeps the frames on your head
- TR90 frames are durable, flexible, hypoallergenic & impact-resistant
- Auto-lock stop hinge allows the temples to lock securely in place for a sturdy fit
- Water- & smudge-resistant coating makes the lenses easier to clean with clearer optics
- Lens Vents keep air flowing across your lenses, eliminating fog & moisture build-up
- Maximum lens coverage shields your eyes with ultimate UV A/B protection in all directions

| CORE | DESCRIPTION | PRICE |
|----------------|--|----------|
| 20662600399KA | MATTE BLACK FRAME WITH GRAY LENSES | \$100.00 |
| MIRROR | DESCRIPTION | PRICE |
| 2066262M2992B | MATTE BLACK FRAME WITH GOLD MIRROR LENSES | \$100.00 |
| 20662671C99B3 | MATTE BLACK AND HI-VIS YELLOW FRAME WITH INFRARED MIRROR LENSES | \$100.00 |
| 206626A1W9980 | MATTE PHOENIX FIRE FRAME WITH BRIGHT PINK MIRROR LENSES | \$100.00 |
| 206626W0P99V8 | MATTE HI-VIS YELLOW AND MATTE CAPRI FRAME WITH EMERALD GREEN MIRROR LENSES | \$100.00 |
| TUNED BASEBALL | DESCRIPTION | PRICE |
| 206626WWK99W1 | MATTE WHITE AND RED FRAME WITH BASEBALL TUNED BLUE MIRROR LENSES | \$110.00 |

CORE



20662600399KA

MIRROR



2066262M2992B



20662671C99B3



206626A1W9980



206626W0P99V8

TUNED BASEBALL



206626WWK99W1

UA ASSIST 2

FIRST SHIP:C/O

- TRITAN RENEW™ injected front & temples use a BPA-free plastic with up to 50% recycled content
- TRITAN TR18 lenses are BPA-free & impact-resistant
- Rubber non-slip nose pads for ultimate comfort
- Silicone sleeve temple tips help keep the frames in place & provide extra comfort
- Durable, flexible, hypoallergenic & impact-resistant frame
- Auto-lock stop hinge allows the temples to lock securely in place for a sturdy fit
- Comes with a soft microfiber pouch to keep your eyewear clean & protected
- All UA Eyewear defends against 100% of harmful UVA/B rays
- 3 year warranty against any material or manufacturing defects

| POLARIZED | DESCRIPTION | PRICE |
|---------------|---|----------|
| 20529308A57M9 | MATTE BLACK FRAME WITH GRAY POLARIZED LENSES | \$110.00 |
| 20529309V57JY | TRANSPARENT MOD GREY FRAME WITH DARK BLUE MIRROR POLARIZED LENSES | \$110.00 |
| CORE | DESCRIPTION | PRICE |
| 20529300357IR | MATTE BLACK FRAME WITH GREY LENSES | \$80.00 |
| MIRROR | DESCRIPTION | PRICE |
| 20529380757Z9 | BLACK FRAME WITH EMERALD MIRROR LENSES | \$90.00 |
| 2052930VK57Z0 | MATTE BLACK FRAME WITH BLUE CHROME MIRROR LENSES | \$90.00 |
| 20529390057DC | CRYSTAL CLEAR FRAME WITH SILVER CHROME MIRROR LENSES | \$90.00 |

POLARIZED



20529308A57M9

20529309V57JY

CORE



20529300357IR

MIRROR



20529380757Z9

2052930VK57Z0



20529390057DC



TRAINING ARMOURFUSE

- Brilliant, vibrant team colors permanently fused directly into textiles
- Limitless customization, all-inclusive pricing with exclusive UA designs and customized prints
- 41 different colors and 18 prints available
- 6 piece minimum order

AF TRAINING HOODY

XS-2XL, OVERSIZE 3XL-4XL, YSM-YXL

| STYLE | SIZE | PRICE |
|-------------|---------|----------|
| UJGSLHM (M) | XS-2XL | \$122.00 |
| UJGSLHY (Y) | YSM-YXL | \$111.50 |

OVERSIZED SURCHARGE +\$5 PER SIZE
ADDITIONAL LENGTH OPTIONS FOUND ON PAGE 64



SPEED

NEW DESIGN FIRST SHIP: 6/1/2024



SPRINT



SCOUT



UA ECLIPSE



AF LONGSLEEVE HOODED SHOOTER

XS-2XL, OVERSIZE 3XL-4XL, YSM-YXL

| STYLE | SIZE | PRICE |
|-------------|---------|----------|
| UJGTHDM (M) | SM-2XL | \$119.00 |
| UJGTHDY (Y) | YSM-YXL | \$114.00 |

- New lightweight 4.8 oz. fabric with increased stretch for ultimate comfort

OVERSIZED SURCHARGE +\$5 PER SIZE
ADDITIONAL LENGTH OPTIONS FOUND ON PAGE 64



SPEED

NEW DESIGN FIRST SHIP: 6/1/2024

AF SHORTSLEEVE HOODED SHOOTER

XS-2XL, OVERSIZE 3XL-4XL, YSM-YXL

| STYLE | SIZE | PRICE |
|-------------|---------|----------|
| UJGTSSM (M) | SM-2XL | \$114.00 |
| UJGTSSY (Y) | YSM-YXL | \$109.00 |

- New lightweight 4.8 oz. fabric with increased stretch for ultimate comfort

OVERSIZED SURCHARGE +\$5 PER SIZE
ADDITIONAL LENGTH OPTIONS FOUND ON PAGE 64



SPEED

NEW DESIGN FIRST SHIP: 6/1/2024

AF SLEEVELESS HOODED SHOOTER

XS-2XL, OVERSIZE 3XL-4XL

| STYLE | SIZE | PRICE |
|------------|--------|---------|
| UJGHVM (M) | SM-2XL | \$94.00 |

- New lightweight 4.8 oz. fabric with increased stretch for ultimate comfort

OVERSIZED SURCHARGE +\$5 PER SIZE
ADDITIONAL LENGTH OPTIONS FOUND ON PAGE 64



SPEED

NEW DESIGN FIRST SHIP: 6/1/2024

AF SHORTSLEEVE ¼ ZIP

XS-2XL, OVERSIZE 3XL-4XL

| STYLE | SIZE | PRICE |
|-------------|--------|----------|
| UJGQZVM (M) | SM-2XL | \$120.00 |

OVERSIZED SURCHARGE +\$5 PER SIZE
ADDITIONAL LENGTH OPTIONS FOUND ON PAGE 64



SPEED

NEW DESIGN FIRST SHIP: 6/1/2024



SPRINT



SCOUT



UA ECLIPSE



SPRINT



SCOUT



UA ECLIPSE



SPRINT



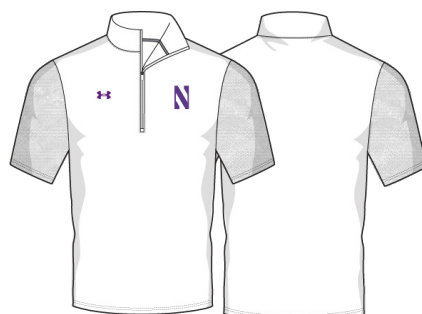
SCOUT



UA ECLIPSE



SPRINT



SCOUT



UA ECLIPSE

AF TRAINING ¼ ZIP

XS-2XL, OVERSIZE 3XL-4XL

- New lightweight 4.8 oz. fabric with increased stretch for ultimate comfort

| STYLE | SIZE | PRICE |
|-------------|--------|----------|
| UJGQZLM (M) | SM-2XL | \$130.00 |

OVERSIZED SURCHARGE +\$5 PER SIZE
ADDITIONAL LENGTH OPTIONS FOUND ON PAGE 64



SPEED

NEW DESIGN FIRST SHIP: 6/1/2024

AF TRAINING LONGSLEEVE TEE

XS-2XL, OVERSIZE 3XL-4XL, YSM-YXL

| STYLE | SIZE | PRICE |
|-------------|---------|---------|
| UJGJL2M (M) | XS-2XL | \$90.00 |
| UJGJL2Y (Y) | YSM-YXL | \$86.00 |

- New lightweight 4.8 oz. fabric with increased stretch for ultimate comfort

OVERSIZED SURCHARGE +\$5 PER SIZE
ADDITIONAL LENGTH OPTIONS FOUND ON PAGE 64



SPEED

NEW DESIGN FIRST SHIP: 6/1/2024

AF TRAINING SHORTSLEEVE TEE

XS-2XL, OVERSIZE 3XL-4XL, YSM-YXL

| LOOSE S S T | SIZE | PRICE |
|-------------|---------|---------|
| UJGS2M (M) | XS-2XL | \$75.00 |
| UJGS2Y (Y) | YSM-YXL | \$71.00 |

- New lightweight 4.8 oz. fabric with increased stretch for ultimate comfort

OVERSIZED SURCHARGE +\$5 PER SIZE
ADDITIONAL LENGTH OPTIONS FOUND ON PAGE 64



SPEED

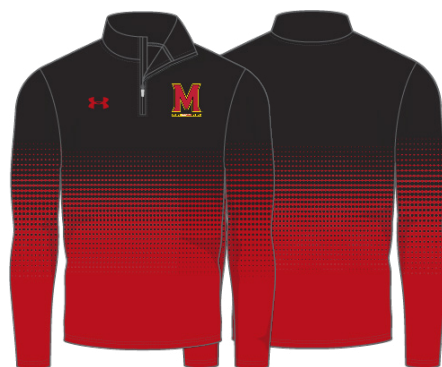
NEW DESIGN FIRST SHIP: 6/1/2024



SPRINT



SCOUT



UA ECLIPSE



SPRINT



SCOUT



UA ECLIPSE



SPRINT



SCOUT



UA ECLIPSE



NEW

AF TRAINING SHORTS

FIRST SHIP: 10/25/2024 // XS-2XL, OVERSIZE 3XL-5XL, YSM-YXL

| POCKETED SHORT | SIZE | PRICE |
|----------------|---------|---------|
| UJGS3PM (M) | XS-2XL | \$75.00 |
| UJGS3PY (Y) | YSM-YXL | \$70.00 |

| NON-POCKETED SHORT | SIZE | PRICE |
|--------------------|---------|---------|
| UJGS3M (M) | XS-2XL | \$70.00 |
| UJGS3Y (Y) | YSM-YXL | \$65.00 |

9" INSEAM FOR POCKETED AND NON-POCKETED SHORT
OVERSIZED SURCHARGE +\$5 PER SIZE
ADDITIONAL LENGTH OPTIONS FOUND ON PAGE 64



SPEED

NEW DESIGN FIRST SHIP: 6/1/2024



SPRINT



SCOUT



UA ECLIPSE



AF TRAINING COMPRESSION SLEEVELESS

XS-2XL, OVERSIZE 3XL-4XL

| STYLE | SIZE | PRICE |
|-----------|--------|---------|
| UJGCB (M) | XS-2XL | \$65.00 |

OVERSIZED SURCHARGE +\$5 PER SIZE
ADDITIONAL LENGTH OPTIONS FOUND ON PAGE 64



SPEED

NEW DESIGN FIRST SHIP: 6/1/2024



SPRINT



SCOUT



UA ECLIPSE

HALF SLEEVE



SPEED

NEW DESIGN FIRST SHIP: 6/1/2024

AF TRAINING COMPRESSION HALF SLEEVE

XS-2XL, OVERSIZE 3XL-4XL

| STYLE | SIZE | PRICE |
|------------|--------|---------|
| UJGHBL (M) | XS-2XL | \$70.50 |

OVERSIZED SURCHARGE +\$5 PER SIZE
ADDITIONAL LENGTH OPTIONS FOUND ON PAGE 64



SPRINT

AF TRAINING COMPRESSION SHORTSLEEVE

XS-2XL, OVERSIZE 3XL-4XL

| STYLE | SIZE | PRICE |
|------------|--------|---------|
| UJGTBL (M) | XS-2XL | \$65.00 |

OVERSIZED SURCHARGE +\$5 PER SIZE
ADDITIONAL LENGTH OPTIONS FOUND ON PAGE 64



SCOUT

AF TRAINING COMPRESSION LONGSLEEVE

XS-2XL, OVERSIZE 3XL-4XL

| STYLE | SIZE | PRICE |
|------------|--------|---------|
| UJGCLS (M) | XS-2XL | \$75.50 |

OVERSIZED SURCHARGE +\$5 PER SIZE
ADDITIONAL LENGTH OPTIONS FOUND ON PAGE 64



UA ECLIPSE

SHORTSLEEVE



SPEED

NEW DESIGN FIRST SHIP: 6/1/2024

LONGSLEEVE



SPEED

NEW DESIGN FIRST SHIP: 6/1/2024



SPRINT



SPRINT



SCOUT



SCOUT



UA ECLIPSE



UA ECLIPSE



| | | | | | | |
|---------------|------------------|----------------|-----------------|------------------|----------------|--------------|
| | | | | | | |
| WHITE | BLACK | PITCH GRAY | GRAPHITE | BASEBALL GRAY | SILVER GRAY | OCEAN STORM |
| | | | | | | |
| MIDNIGHT NAVY | ROYAL | POWDERKEG BLUE | ELECTRIC BLUE | CAPRI | CAROLINA BLUE | COASTAL TEAL |
| | | | | | | |
| PURPLE | MAROON | CARDINAL | CRIMSON | UNIVERSITY RED | TROPIC PINK | |
| | | | | | | |
| PINK | VINTAGE WHITE | TAXI | STEELTOWN GOLD | TENNESSEE ORANGE | DARK ORANGE | |
| | | | | | | |
| TEXAS ORANGE | CLEVELAND BROWN | GOLD RUSH | TEAM VEGAS GOLD | GRAYSTONE | MILITARY GREEN | |
| | | | | | | |
| FOREST GREEN | TEAM KELLY GREEN | MIAMI TEAL | SEA GLASS | POISON | | |

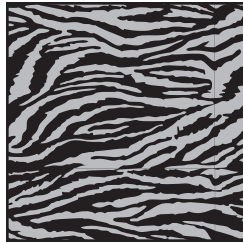
FLUORESCENTS (NOT CURRENTLY AVAILABLE IN TONAL PRINTS OR ON GAMEDAY PRODUCT)

| | | | |
|--------------------|------------------|-------------------|--------------------|
| | | | |
| ORANGE FLUORESCENT | PINK FLUORESCENT | GREEN FLUORESCENT | YELLOW FLUORESCENT |

Prints available in all ArmourFuse colors. (Fluorescents not currently available in tonal prints)



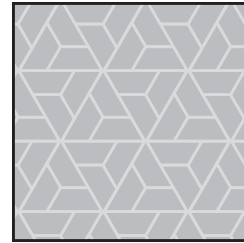
WOODLAND CAMO



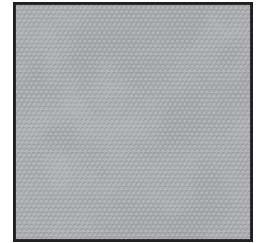
BENGAL



BLUR



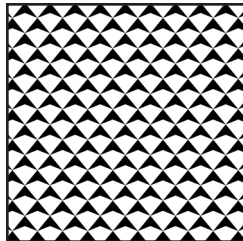
RAZOR



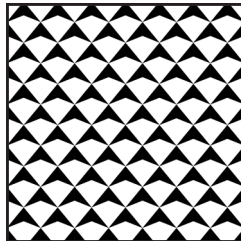
SCALE



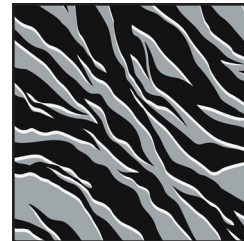
SPLINTER



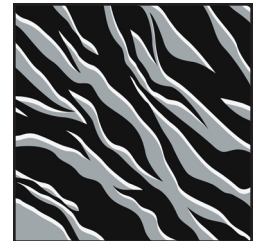
SHIELD MICRO



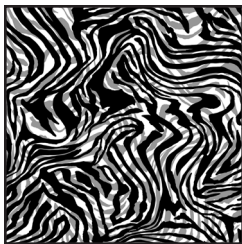
SHIELD MID



TIGER MICRO



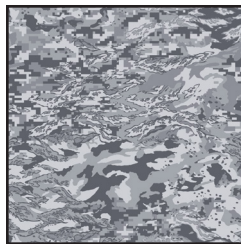
TIGER MACRO



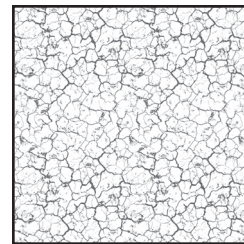
ZEBRA MICRO



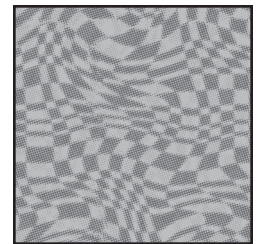
ZEBRA MACRO



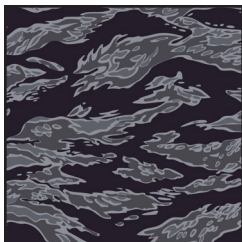
ABC CAMO



CRACKLE



HAFITONE CHECKER



TIGER CAMO



FLORAL
(Not available on Gameday)

DESERT CAMO (LOCKED COLOR COMBINATIONS, CANNOT BE ALTERED)



DESERT
WOODLAND CAMO

STOCK DECORATION OPTIONS

| SCREEN PRINT | ONE COLOR | TWO COLORS |
|----------------------|-----------|------------|
| Team Name | \$5.50 | \$10.50 |
| Team Mascot/Logo | \$5.50 | \$10.50 |
| Front + Back Numbers | \$12.00 | \$17.00 |

| TWILL | ONE COLOR | TWO COLORS |
|---------------------------------------|-----------|------------|
| Team Name | \$22.00 | \$27.00 |
| Front + Back Numbers | \$27.00 | \$32.00 |
| Player Names | \$22.00 | |
| ArmourFuse Twill Patch (Max 3"x3") | \$11.00 | \$11.00 |

| EMBROIDERY | ONE COLOR | TWO COLORS |
|----------------------|-----------|------------|
| Team Name (up to 2") | \$10.00 | \$10.00 |

see page 64 for Embroidered Mascot/Logo pricing

ADDITIONAL STOCK OPTIONS & NOTES

- Player Numbers Per Location = 1/2 of above
"Front + Back Numbers" pricing
- Player Name Directly On Jersey Only (No Nameplates)
- ArmourFuse Twill = Twill Pricing +\$10
- Add Tail to Script Font Twill Team Name +\$10
- Add Embroidery to Twill Tail +\$10
- Non-Stock designs and lettering may require additional
charge at Under Armour's discretion (call for quote)

FONT OPTIONS

BADGER
ABCDEFGHIJKLMNOPQRSTUVWXYZ
0123456789

BEAR
ABCDEFGHIJKLMNOPQRSTUVWXYZ
0123456789

CADET
ABCDEFGHIJKLMNOPQRSTUVWXYZ
0123456789

FULL BLOCK
ABCDEFGHIJKLMNOPQRSTUVWXYZ
0123456789

TERRAFONT
ABCDEFGHIJKLMNOPQRSTUVWXYZ
0123456789

PREMIER
ABCDEFGHIJKLMNOPQRSTUVWXYZ
0123456789

TUSCAN
ABCDEFGHIJKLMNOPQRSTUVWXYZ
0123456789

UNDENIABLE
ABCDEFGHIJKLMNOPQRSTUVWXYZ
0123456789

UA COLLEGIATE SANS
ABCDEFGHIJKLMNOPQRSTUVWXYZ
0123456789

UA COLLEGIATE SANS CONDENSED
ABCDEFGHIJKLMNOPQRSTUVWXYZ
0123456789

UA COLLEGIATE SERIF
ABCDEFGHIJKLMNOPQRSTUVWXYZ
0123456789

UA COLLEGIATE SERIF CONDENSED
ABCDEFGHIJKLMNOPQRSTUVWXYZ
0123456789

MODERN
ABCDEFGHIJKLMNOPQRSTUVWXYZ
0123456789

ATHLETIC SCRIPT
*ABCDEFGHIJKLMNOPQRSTUVWXYZ
abcdefghijklmnopqrstuvwxyz*

SWINGMAN
*ABCDEFGHIJKLMNOPQRSTUVWXYZ
abcdefghijklmnopqrstuvwxyz*

NOTE:
• Gameday Select Package Pricing now includes all
of the above listed fonts
• Dropped fonts available for fill-in orders only

LETTERING ARRANGEMENTS

STRAIGHT
TEAMNAME

BRIDGED
TEAMNAME

ARCH
TEAMNAME

VERTICAL ARCH
TEAMNAME

SCRIPT WITH TAIL
Teamname

ADDITIONAL LENGTH OPTIONS (ARMOURFUSE ONLY - \$10 FOR ALL +/- OPTIONS)

BASEBALL/SOFTBALL

| TYPE | ADJUSTMENT | CODE |
|---------|-------------------------|---------|
| JERSEYS | Add 2" body length | UIX2BDY |
| | Add 4" body length | UIX4BDY |
| PANTS | Subtract 2" from inseam | UISHTN2 |
| | Add 2" to inseam length | UIX2INS |
| | Add 4" to inseam length | UIX4INS |

FOOTBALL

| TYPE | ADJUSTMENT | CODE |
|---------|-------------------------|---------|
| JERSEYS | Shorten to waist length | |
| PANTS | Add 2" to inseam length | UIX2INS |

LACROSSE/ FIELD HOCKEY

| TYPE | ADJUSTMENT | CODE |
|---------|-------------------------|---------|
| JERSEYS | Add 2" body length | UIX2BDY |
| SHORTS | Subtract 1" from inseam | UISHTN1 |
| | Subtract 2" from inseam | UISHTN2 |
| | Add 1" to inseam length | UIX1INS |
| | Add 2" to inseam length | UIX2INS |
| KILTS | Add 1" to inseam length | UIX1INS |
| | Add 2" to inseam length | UIX2INS |

BASKETBALL

| TYPE | ADJUSTMENT | CODE |
|-----------------|-------------------------|---------|
| JERSEYS | Add 2" body length | UIX2BDY |
| | Add 4" body length | UIX4BDY |
| | Add 6" body length | UIX6BDY |
| SHORTS | Subtract 1" from inseam | UISHTN1 |
| | Add 1" to inseam length | UIX1INS |
| | Add 2" to inseam length | UIX2INS |
| | Add 3" to inseam length | UIX3INS |
| SHOOTING SHIRTS | Add 2" body, 1" sleeve | UIX2B1S |
| | Add 4" body, 2" sleeve | UIX4B2S |
| | Add 6" body, 3" sleeve | UIX6B3S |

SOCCER

| TYPE | ADJUSTMENT | CODE |
|---------|-------------------------|---------|
| JERSEYS | Add 2" body length | UIX2BDY |
| SHORTS | Subtract 1" from inseam | UISHTN1 |
| | Subtract 2" from inseam | UISHTN2 |
| | Add 1" to inseam length | UIX1INS |
| | Add 2" to inseam length | UIX2INS |

TRACK & FIELD

| TYPE | ADJUSTMENT | CODE |
|---------------|-------------------------|---------|
| JERSEYS | Add 2" body length | UIX2BDY |
| LOOSE SHORTS* | Subtract 1" from inseam | UISHTN1 |
| | Add 1" to inseam length | UIX1INS |

*UITS2M & UITS2W ONLY

TRAINING

| TYPE | ADJUSTMENT | CODE |
|---------|-------------------------|---------|
| JERSEYS | Add 2" body length | UIX2BDY |
| | Add 4" body length | UIX4BDY |
| | Add 6" body length | UIX6BDY |
| SHORTS | Subtract 1" from inseam | UISHTN1 |
| | Subtract 2" from inseam | UISHTN2 |
| | Add 1" to inseam length | UIX1INS |
| | Add 2" to inseam length | UIX2INS |
| | Add 3" to inseam length | UIX3INS |

VOLLEYBALL

| TYPE | ADJUSTMENT | CODE |
|---------|-------------------------|---------|
| JERSEYS | Add 2" body length | UIX2BDY |
| SHORTS | Subtract 1" from inseam | UISHTN1 |
| | Subtract 2" from inseam | UISHTN2 |

EMBROIDERY

MASCOTS (STOCK ONLY)

LIST PRICE

| | |
|-----------------------|---------|
| Mascot | \$11.00 |
| Mascot with One Line | \$12.00 |
| Mascot with Two Lines | \$13.00 |
| American Flag | \$11.00 |
| Small/Homeplate | \$6.00 |

DIGITIZING (STOCK AND ARMOURFUSE ONLY)

LIST PRICE

| | |
|-----------------------------|----------------|
| Stock Designs and Lettering | \$180.00 |
| Custom Logos | Call for Quote |

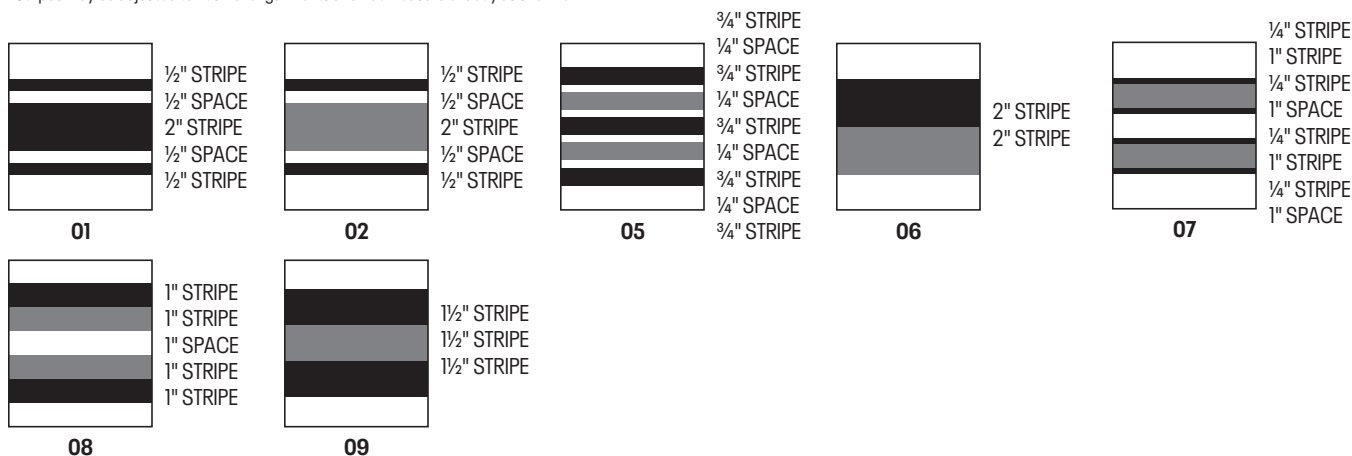
- Prices are based upon size of designs, not the number of colors. Prices are subject to change if design exceeds specifications.
- Dimensions are maximum space - unless specifically noted best judgement will be used.
- Letter styles are available horizontal or arched.
- No digitizing charge for team names.

- Flag size up to 2" by 3" (bigger area - call for quote)
- Minimum order charges apply for embroidery
- All designs require an additional digitizing charge, except:
 - 1) Digitized designs supplied on a disk
 - 2) Digitized design is a re-order of an existing design

STANDARD SLEEVE PRINT STRIPES

*OPTIONS - Code numbers listed below stripe patterns

*Stripes may be adjusted to fit smaller garments and not measure exactly as shown.



ARMOURFUSE® GRAPHIC OPTIONS

A

B

C

D

E

F

G

H

I

J

K

L

M

UNIFORM CARE INSTRUCTIONS

To enhance the appearance and extend the life of your uniforms, Under Armour recommends that you follow these cleaning and storing procedures:

- DO NOT DRY CLEAN
- DO NOT WASH IN HOT WATER
- DO NOT USE CHLORINE BLEACH
- DO NOT USE FABRIC SOFTENER
- DO NOT WASH WHITES AND COLORS TOGETHER
- DO NOT OVERLOAD THE WASHING MACHINE
- DO NOT MACHINE DRY ON HIGH HEAT
- DO NOT LEAVE WET OR DAMP GARMENTS IN YOUR TRAVEL BAG, IN A PILE WITH OTHER CLOTHING OR IN WASHING MACHINE

- Pre wash uniform prior to use.
- Uniforms should always be laundered immediately after wearing. However, if this is not possible, rinse garments and hang individually on rust-proof hangers. (Moisture may cause color migration of acid dyes so we advise separating wet or damp uniforms.)
- Belts and any other contrasting color items should be washed separately from the garment.
- It is always advisable to test wash a single uniform according to directions before washing an entire load.
- Wash and rinse all garments in warm water (approx. 110°) with mild detergent. Remove promptly after wash cycle.
- For optimum results, hang garments (especially those with elastane) to dry. If you cannot hang dry, machine dry on the lowest setting. Turn jerseys inside out before machine drying. Remove items from dryer immediately upon completion of the cycle. (Excessive heat can cause fabric shrinkage, discoloration, and cracking and peeling of vinyl plastisol lettering inks.)
- Make sure uniforms are completely dry before storing. Store in a dry area to prevent mildew. Protect them from sunlight and fluorescent light to prevent yellowing.


PLEASE NOTE: Under Armour will not be responsible for uniforms that are damaged due to improper care and maintenance. Failure to follow our specified care instructions will void all guarantees.


UNIFORM FILL-IN LIFECYCLE

| LAST SHOWN IN CATALOG | LAST FILL-IN SEASON | LAST FILL-IN SHIP |
|--------------------------|------------------------|----------------------|
| FA'21 | FA'24 | 12/15/2024 |
| WI'21 | WI'24 | 3/15/2025 |
| SP'22 | SP'25 | 6/15/2025 |
| FA'22 | FA'25 | 12/15/2025 |
| WI'22 | WI'25 | 3/15/2026 |
| SP'23 | SP'26 | 6/15/2026 |
| FA'23 | FA'26 | 12/15/2026 |
| W'23 | W'26 | 3/15/2027 |
| SP'24 | SP'27 | 6/15/2027 |
| FA'24 | FA'27 | 12/15/2027 |
| WI'24 | WI'27 | 3/15/2028 |
| SP'25 | SP'28 | 6/15/2028 |

**GAMEDAY TEAM UNIFORMS**
ORDERING INFORMATION AND CUSTOMER SERVICE:
1-800-474-6118
www.uacustomuniforms.com

**UA NEXT**
ORDERING INFORMATION AND CUSTOMER SERVICE:
1-888-871-0990
www.underarmourteamuniforms.com

**ARMOURFUSE™ TEAM UNIFORMS**
ORDERING INFORMATION AND CUSTOMER SERVICE:
1-888-871-0990
www.underarmourteamuniforms.com

**STOCK TEAM UNIFORMS**
ORDERING INFORMATION AND CUSTOMER SERVICE:
1-888-871-0990
www.underarmourteamuniforms.com

ORDERING INFORMATION

Guarantee:
The materials and workmanship of our garments are guaranteed when given fair treatment and used under normal conditions.

Color Matching:
Scientifically, it is not possible to achieve a perfect color match from one dye lot to another. Therefore, we cannot guarantee a perfect match from order to order or from one fabric to another.

Color Abbreviation Key:
The following abbreviations may be used when ordering merchandise.

| | | | |
|-------------------------|----------------------------|--------------------------|---------------------------|
| BG Baseball Gray | EB Electric Blue | PI Pink | SI Silver Grey |
| BK Black | GP Graphite | PK Powderkeg Blue | TI Taxi |
| BR Brown | KE Team Kelly Green | PO Poison | TE Teal |
| CA Cardinal | LG Steeltown Gold | PU Purple | TO Texas Orange |
| CB Carolina Blue | MA Maroon | RO Royal | TP Tropic Pink |
| CP Capri | NA Midnight Navy | RU Gold Rush | VG Team Vegas Gold |
| DG Forest Green | OR Dark Orange | SC University Red | WH White |

Price Policy:
All catalog prices are list or suggested retail. Prices are subject to change without notice. Merchandise will be invoiced based on the prices in effect at the time the order is placed.

Terms:
Prices are FOB shipping point. Payment is due Net 30.

Minimum Order Charges:
A handling charge of \$10.00 will be added to orders of less than \$150.00 list.
Custom and GamedaySelect fill-in minimum order is 6 units per style and color. A 100% surcharge will be applied to orders of 1-2 units, and a 50% surcharge for orders of 3-5 units.

Lettered Orders for COD Shipment:
A 50% deposit is required on all lettered orders calling for COD shipment.

Delivery:
Shipments will always be made by the fastest, least expensive means possible. The customer will assume any additional expense required to expedite delivery.

Order Cancellations:
Cancellations must be received at least one day prior to the ship date. Special order garments cannot be cancelled after they have been cut. Lettered garments cannot be cancelled after they have been printed or sewn.

Returns:
Claims must be reported to our office within 10 working days of merchandise receipt. Returns cannot be made after 30 days of the invoice date. All returns for plain merchandise must be clearly marked with an authorization number or label obtained from our office. All returns for lettered merchandise must be clearly marked "LETTERING." When requesting an authorization label, the following information is required: Reason for return, Invoice #, Style #, Color, Size/Quantity. An authorization label will then be sent to you to prepare the merchandise for return shipment. We reserve the right to repair, replace or issue credit for any merchandise returned. A 15% restocking fee and shipping charges will be charged for merchandise returned that is either not damaged or the damage is determined not to be our fault. All worn garments must be properly laundered prior to return or they will not be accepted.

All custom and custom-stock uniforms may not be returned under any circumstances if delivered properly.

Shortages:
All claims must be made within 10 days of the invoice date.

New Accounts:
All new accounts must be opened through your local sales representative. New accounts that do not have a Dunn and Bradstreet rating will be shipped COD until a credit line has been established.

Samples:
Samples will be entered and billed as a regular order. Samples cannot be returned without prior approval from our office.

Imprint Orders:
All imprint orders must be emailed, mailed or faxed in with detailed instructions on UA order forms. Imprint orders will not be taken by phone. Once garments have been lettered, the order cannot be cancelled or returned.

Under Armour will not be responsible for any items not checked for order accuracy or sizing before being sent to a printer / screener. We will not be responsible for shrinkage, defects, or damages caused during the imprinting of our garments by sources other than our own lettering department. Screenprinting sublimated uniforms can cause color migration. We do not recommend screenprinting on sublimated garments.
Photography is the property of Under Armour and is not to be used without written authorization.

This image shows a single sheet of white paper with horizontal ruling lines. The lines are evenly spaced and run across the width of the page. There are no margins, text, or other markings on the paper.

COMPRESSION



Ultra-tight, second skin fit that keeps you locked in & makes you feel like you can do anything.

FITTED



A slimmer, athletic cut that allows total mobility but eliminates the bulk of extra fabric.

LOOSE

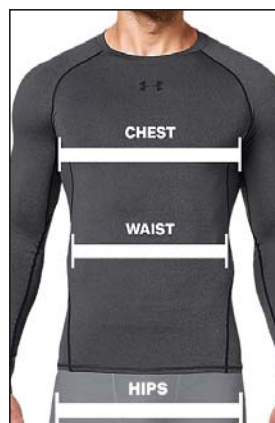


Fuller cut for complete comfort, total range of motion & greater breathability.

MEN'S

| | US SIZE | CHEST (IN) | WAIST (IN) | HIP (IN) |
|-----|---------|------------|------------|----------|
| SM | 26-28 | 34-37 | 29-31 | 34-36 |
| MD | 30-32 | 37-41 | 31-34 | 36-39 |
| LG | 34-36 | 41-44 | 34-37 | 39-42 |
| XL | 38-40 | 44-48 | 37-41 | 42-46 |
| 2XL | 42-44 | 48-52 | 41-45.5 | 46-50 |
| 3XL | 46-48 | 52-56 | 45.5-50 | 50-54 |
| 4XL | 50-52 | 56-60 | 50-54.5 | 54-58 |
| 5XL | 54-56 | 60-64 | 54.5-59 | 58-62 |

HOW TO MEASURE



CHEST: Place the tape measure under your arms at the fullest part of your chest, wrap around your body until your fingers meet and mark the measurement

WAIST: Measure around your natural waistline – right above your hips. Be careful not to squeeze too tight to allow a little give.

HIPS: With your feet together, measure around the fullest part of your hips to ensure you'll have enough room to move comfortably.

BOYS

FITTED



A slimmer, athletic cut that allows total mobility but eliminates the bulk of extra fabric.

LOOSE



Fuller cut for complete comfort, total range of motion & greater breathability.

| | US SIZE | CHEST (IN) | WAIST (IN) | HIP (IN) |
|-----|---------|------------|------------|----------|
| YXS | 7 | 25-26 | 23-24 | 26-27 |
| YSM | 8 | 26-27 | 24-25 | 27-28 |
| YMD | 10-12 | 27-29 | 25-27 | 28-31 |
| YLG | 14-16 | 29-32.5 | 27-30 | 31-34 |
| YXL | 18-20 | 32.5-35.5 | 30-33 | 34-37 |

HOW TO MEASURE



CHEST: Place the tape measure under your arms at the fullest part of your chest, wrap around your body until your fingers meet and mark the measurement

WAIST: Measure around your natural waistline – right above your hips. Be careful not to squeeze too tight to allow a little give.

HIPS: With your feet together, measure around the fullest part of your hips to ensure you'll have enough room to move comfortably.

WOMEN'S

COMPRESSION



Ultra-tight, second skin fit that keeps you locked in & makes you feel like you can do anything.

FITTED



Sits close to the skin for a streamlined fit without the squeeze of compression.

LOOSE



Fuller, more generous cut for enhanced range of motion & an effortlessly relaxed fit.

| | US SIZE | CHEST (IN) | WAIST (IN) | HIP (IN) |
|-----|---------|------------|------------|----------|
| XS | 0-2 | 32.5-33.5 | 25.5-27 | 34.5-36 |
| S | 4-6 | 33.5-36 | 27-29 | 36-38 |
| M | 8-10 | 36-38 | 29-31 | 38-40 |
| L | 12-14 | 38-41 | 31-34 | 40-43 |
| XL | 16 | 41-44 | 34-37 | 43-46 |
| 2XL | 18 | 44-47 | 37-40 | 46-49 |
| 3XL | 20 | 47-50 | 40-43 | 49-52 |
| 4XL | 22 | 50-53 | 43-46 | 52-55 |

HOW TO MEASURE



CHEST: Place the tape measure under your arms at the fullest part of your chest, wrap around your body until your fingers meet and mark the measurement

WAIST: Measure around your natural waistline – right above your hips. Be careful not to squeeze too tight to allow a little give.

HIPS: With your feet together, measure around the fullest part of your hips to ensure you'll have enough room to move comfortably.

GIRLS

FITTED



Sits close to the skin for a streamlined fit without the squeeze of compression.

LOOSE



Fuller, more generous cut for enhanced range of motion & an effortlessly relaxed fit.

| | US SIZE | CHEST (IN) | WAIST (IN) | HIP (IN) |
|-----|---------|------------|------------|-----------|
| YXS | 7 | 25-26.5 | 23-24 | 26-28 |
| YSM | 8 | 26.5-27.5 | 24-24.5 | 28-29 |
| YMD | 10-12 | 27.5-30.5 | 24.5-26.5 | 29-32.5 |
| YLG | 14-16 | 30.5-34 | 26.5-30.5 | 32.5-36.5 |
| YXL | 18-20 | 34-36 | 30.5-32.5 | 36.5-38.5 |

HOW TO MEASURE



CHEST: Place the tape measure under your arms at the fullest part of your chest, wrap around your body until your fingers meet and mark the measurement

WAIST: Measure around your natural waistline – right above your hips. Be careful not to squeeze too tight to allow a little give.

HIPS: With your feet together, measure around the fullest part of your hips to ensure you'll have enough room to move comfortably.

WEST

PAT BAUER
SR. REGIONAL MANAGER
410.299.3798
pbauer@underarmour.com
WA // OR // MT // ID // AK // WY

JEFF UTTZ
626.484.3496
jeffu@underarmour.com
CA // NV // HI // AZ // UT

HALEY GILLMORE
303.562.6053
hgillmore@underarmour.com
East & North TX // OK // CO

FRANK WEBER
618.540.3955
fweber@underarmour.com
IL // MO // IA // MN // NE // KS // ND // SD //

BLAKE KUENZI
405.488.4942
blake.kuenzi@underarmour.com
NM // Central, South & West Texas

EAST

FRANK NUNAN
SR. REGIONAL MANAGER
484.576.9777
fnunan@underarmour.com
DE // NJ // Philadelphia area

MONTE GIBBS
662.801.3039
mgibbs@underarmour.com
TN // LA // AL // MS // AR // KY

DAN WILLIAMS
352.672.1676
dwilliams@underarmour.com
NC // SC // GA // FL

TONY DONOFRIO
419.356.9742
tonyd@underarmour.com
WI // MI // IN // OH // WV

GARY POWERS
410.746.3790
gpowers@underarmour.com
MD // DC // VA // Eastern PA

BOB BARTLETT
315.380.6505
bobb@underarmour.com
NY // Western PA

JAY KELLEHER
443.615.0462
jkelleher@underarmour.com
New England

COLLEGIATE

TOMMY AMICO
951.808.0367
tamico@underarmour.com
WEST

TODD LOCKLEAR
410.454.6572
tlocklear@underarmour.com
EAST

CHRIS PORTS
443.220.1009
cports@underarmour.com
MID ATLANTIC

BELLA GARONE
631.307.0009
isabella.garone@underarmour.com
NORTHEAST

ALEX BRUEGGEMANN
410.652.4337
abrueggemann@underarmour.com
SOUTH

LICENSEES

FOUNDER SPORT GROUP
Stock & Armourfuse Uniforms
www.underarmourteamuniforms.com
888.871.0990
UASstatus@foundersportgroup.com

POWERS ATHLETIC
Custom Uniforms
www.uacustomuniforms.com
800.474.6118
customerservice@powersathletic.com

THE GAME
Custom Headwear
www.uateamheadwear.com
800.723.5656
customerservice@thegame.com

USB
McDavid & Shock Doctor
Water Bottles
657.383.4438
UA@unitedspb.com

SAFILO
Eyewear
uateamsportsorders@safilo.com



TEL: 1.888.828.1547 / B2B: ARMOURHOUSE.UNDERARMOUR.COM

COLLEGIATE

TEAMSPTS COLLEGIATE / TEAMSPTS.COLLEGIATE@UNDERARMOUR.COM

EAST

TEAM SPORTS SE / TEAMSPORTSSE@UNDERARMOUR.COM
TEAM SPORTS NE / TEAMSPORTSNE@UNDERARMOUR.COM

WEST

TEAM SPORTS WC / TEAMSPORTSWC@UNDERARMOUR.COM
TEAM SPORTS SW / TEAMSPORTSSW@UNDERARMOUR.COM

ALL TEAM SPORTS ORDERS AND QUESTIONS PLEASE USE THE FOLLOWING:

1.888.828.1547
Corporate Headquarters
1020 Hull Street
Baltimore, MD 21230

CORPORATE OFFICE HOURS OF OPERATION

Monday through Friday, 8:30am – 5:30pm, EST.

UNDER ARMOUR® B2B – ONLINE ORDERING

armourhouse.underarmour.com

- 24/7 access to check inventory and place orders
- Ability to track orders and shipments
- Priority product allocation
- Faster processing time

UNDER ARMOUR® B2B – SUPPORT

B2B_support@underarmour.com

UNDER ARMOUR® RETURN POLICY

Under Armour® stands behind its gear and EXPECTS nothing less than perfection. If you have received a defective product, an incorrect size, or an incorrect order, please contact us immediately for a return authorization number so that we can quickly process your return and ensure your satisfaction.

ALL RETURNS MUST BE COMPLETED WITHIN 30 DAYS OF RECEIPT AND MUST BE IN REASONABLE CONDITION. ALL RETURNS MUST HAVE THE RA# CLEARLY MARKED ON THE CARTON. ALL RETURNS ARE SUBJECT TO A 15% RE-STOCKING FEE.

Should you need to return or exchange an item, you MUST include your RA#, a copy of your invoice, and an explanation in writing as to why you are returning the item. Send your return to the marked address on your pack list. If you are exchanging merchandise, you are responsible for the cost of returning the product. Original shipping costs are non-refundable. All returned merchandise must be received in new, resalable condition.

ODH RETURNS:

Under Armour Returns
RA#
7030 Tradepoint Ave
Dock Door 69
Sparrows Point, MD 21219

RIALTO RETURNS:

Under Armour Returns
RA#
2510 W Walnut Ave
Rialto, CA 92376

NASHVILLE RETURNS:

Under Armour Returns
RA#
13 Athlete's Way
Mt Juliet, TN 37122

UNDER ARMOUR® CANCELLATION POLICY

Any request for cancellation of an order for UA products must be made, in writing, through the customer's UA Sales Representative. A request to cancel an order must be made more than 30 days before the customer's original desired ship date. All cancellations are subject to UA approval.

ALL PRICES SET FORTH HEREIN ARE SUBJECT TO CHANGE WITHOUT NOTICE.

© 2024 Under Armour®. All rights reserved. All trademarks, images, photographs, logos, and graphics are owned or controlled by Under Armour®.

Confidential and business proprietary information for internal Under Armour®, Inc. use only. Reproduction is strictly prohibited.

UNDER ARMOUR® PERFORMANCE
SPRING 2025